



Blind spots in ecosystem services research and challenges for implementation

Sven Lautenbach^{1,2,3} · Anne-Christine Mupepele^{4,5} · Carsten F. Dormann⁴ · Heera Lee^{2,6} · Stefan Schmidt³ · Samantha S. K. Scholte⁷ · Ralf Seppelt^{3,8,9} · Astrid J. A. van Teeffelen⁷ · Willem Verhagen⁷ · Martin Volk³

Received: 30 January 2018 / Accepted: 12 December 2018 / Published online: 14 January 2019
© Springer-Verlag GmbH Germany, part of Springer Nature 2019

Abstract

Ecosystem service research is high on the policy agenda. Strategies to synthesize individual success stories and derive generalized results to provide guidance for policymakers and stakeholder is central to many science-policy initiatives, such as Intergovernmental Science-Policy Platform on Biodiversity and Ecosystem Services and The Economics of Ecosystems and Biodiversity. However, generalization requires the documentation of basic information on methods and results of case studies, which might not be present throughout all case studies. We used a quantitative review based on a random sample of studies published in the ISI Web of Knowledge between 1996 and 2016 to identify blind spots in ecosystem service research that might hinder the generalization. We structured our analysis along critical questions about five facets that characterize the holistic ideal of ecosystem services research: (i) social-ecological validity of ecosystem data and models, (ii) consideration of trade-offs between ecosystem services, (iii) recognition of off-site effects, (iv) comprehensive and shrewd involvement of stakeholders, and (v) relevance and usability of study results for the operationalization of the ecosystem service concept in practice. Results show that these facets were not addressed by the majority of case studies including more recent studies. Clusters of ecosystem services studied together were prone to different blind spots. To effectively operationalize the concept of ecosystem services, the blind spots need to be addressed by upcoming studies. A list of critical questions is provided to raise the awareness of the blind spots both for synthesis of existing knowledge and for future research agendas.

Keywords Operationalization · Stakeholder involvement · Good modeling practice · Quantitative review · Off-site effects · Trade-offs

Electronic supplementary material The online version of this article (<https://doi.org/10.1007/s10113-018-1457-9>) contains supplementary material, which is available to authorized users.

✉ Sven Lautenbach
sven.lautenbach@uni-heidelberg.de

Anne-Christine Mupepele
anne-christine.mupepele@biom.uni-freiburg.de

Carsten F. Dormann
carsten.dormann@biom.uni-freiburg.de

Heera Lee
heera.lee@kit.edu

Stefan Schmidt
stefan.schmidt@ufz.de

Samantha S. K. Scholte
samantha.scholte@vu.nl

Ralf Seppelt
ralf.seppelt@ufz.de

Astrid J. A. van Teeffelen
astrid.van.teeffelen@vu.nl

Willem Verhagen
willem.verhagen@pbl.nl

Martin Volk
martin.volk@ufz.de

Extended author information available on the last page of the article

Introduction

The concept of ecosystem services (ES) centers around the multiple interactions between ecosystems and human well-being. Since its introduction by early studies (Westman 1977; Ehrlich and Ehrlich 1981), the concept has evolved intensely and integrates ecological, economic, and cultural aspects (Folke 2006; Balvanera et al. 2017). This integrated view distinguishes the ES concept from narrower environmental management perspectives (Baker et al. 2013). The topic has attracted a lot of research in the last 15 years. A look at the available bibliometric research databases shows that the body of literature on this topic is still rapidly growing (McDonough et al. 2017). Although the ES concept has been adopted in high-level policy frameworks, such as the Convention on Biological Diversity,¹ the Intergovernmental Platform on Biodiversity and Ecosystem Services (Díaz et al. 2015), and the EU biodiversity strategy,² there is currently a mismatch between the considerable conceptual understanding of the ES concept in science, and the limited practical application thereof (Díaz et al. 2015). This mismatch is reflected in the ongoing discussion on how the ES concept could be improved, mainstreamed, and operationalized (e.g., Cowling et al. 2008; Daily et al. 2009; Balmford et al. 2011; Bennett et al. 2015; Fischer et al. 2015). This discussion has at least three different strands: (1) the specification of the ES concept itself, (2) the available knowledge on ES for practical implementation of the concept, and (3) best practice for implementation of the concept. There is still vivid debate around the ES concept itself (Norgaard 2010; Sagoff 2011; Bennett et al. 2015; Fischer et al. 2015; Rieb et al. 2017); nevertheless, we want to focus in this paper on the knowledge base needed for practical implementation of the concept.

To successfully transfer knowledge from ES case studies to environmental policies, it is necessary to develop a sound knowledge base with respect to effects of global change on the provisioning of ES. Initiatives such as The Economics of Ecosystems and Biodiversity (TEEB³), the economics of land degradation (ELD⁴), the Intergovernmental Science-Policy Platform on Biodiversity and Ecosystem Services (IPBES⁵), and the World Bank's Global Partnership for Wealth Accounting and the Valuation of Ecosystem Services (WAVES⁶) aim at providing such a knowledge base, thereby relying on the quality of results from individual case studies. Seppelt et al. (2011), however, raised concern about the soundness and usefulness of results of many ES studies. They aligned their criticism along four dimensions,

biophysical realism, trade-offs, off-site effects and stakeholder involvement, and the limited consideration studies paid to each of these facets. ES-based management requires more than a snapshot quantification. The biophysical quantification of ES has to be dynamic (i.e., able to respond to changing environmental or technical conditions), and to be supplemented by an analysis of synergies/trade-offs between ES, and consideration of export of negative or positive decision effects (so-called off-site effects). Similarly, the social context of ES, the preferences, traditions, realizable management options, and governance structures must be taken into account, typically through elicitation and consultation with local stakeholders and decision-makers. Here, we extended the analysis of Seppelt et al. (2011) by (1) analyzing changes between May 2010 and March 2016, (2) extending the analysis with respect to the relevance and usability of study results for the operationalization of the ES concept in practice, and (3) identifying patterns across clusters of studies with respect to the ES analyzed and study characteristics. The aim of our study is to assess current practice in the field of ES research and to highlight blind spots that affect ES studies. Thereby, we hope to stimulate establishing quality standards for upcoming research, improve the operationalization of the ES concept, and contribute to a robust knowledge base for decision support in environmental management.

Methods and data

We investigated how current ES assessments were conducted in practice, by analyzing papers reporting on such assessments. We focused on case studies, and excluded opinion papers, reviews, or methodological papers without an application of the approach since these describe how things should be done instead of how they were done. Seppelt et al. (2011) reviewed publications found through an ISI Web of Knowledge search of articles with the search phrase “ecosystem service” OR “ecosystem services” OR “ecosystem valuation” in the title published up to 24 May 2010. This search yielded 460 articles, of which 153 case studies were analyzed by Seppelt et al. (2011). We extended their database with a sample of articles selected by the same search phrases published between 25 May 2010 and 31 March 2016. Additionally, we included one marine study before 2010 that was excluded by Seppelt et al. (2011), who focused only on terrestrial systems. The query returned a total of 2101 articles between 25 May 2010 and 31 March 2016, from which we randomly selected 807 articles. The random sampling was stratified by year to ensure a similar relative coverage per year. All 807 articles were read by the authors and analyzed with respect to a set of predefined questions which were used to fill attributes of a database. Three hundred fifty-one of the articles in our sample could be used for the purpose of the analysis.

¹ <https://www.cbd.int/>

² <http://ec.europa.eu/environment/nature/biodiversity/comm2006/2020.htm>

³ <http://www.teebweb.org/>

⁴ <http://www.eld-initiative.org/>

⁵ <http://www.ipbes.net/>

⁶ <https://www.wavespartnership.org/en>

Three hundred twenty-one papers of the 807 had to be excluded because they were review papers or opinion or methodological papers without an application in a study. Eighty-eight papers were excluded because they were off-topic. Other studies were excluded as they were not available to us, were not written in English, or were repeated studies already included in the database. In total, our analysis was therefore based on 504 case studies: 153 for 01/1996–05/2010 and 351 for 06/2010–03/2016—the references of studies used in the sample are provided in the appendix. The original data set from Seppelt et al. (2011) was updated for new attributes referring to relevance and usability, type of stakeholder involvement, and trade-off analysis (see Table S4 for all attributes considered and the supplementary material for the full data base).

We used hierarchical Ward clustering (Legendre and Legendre 2003) to identify patterns across studies with respect to (i) the ES studied (*studies by ES cluster*) and (ii) the indicator values of Table S4 (*studies by indicator cluster*). In addition, we formed clusters of ES that were studied together (*ES cluster*)—here, we clustered the ES and not the studies as before. To avoid the double zero problem, the Jaccard similarity measure (Legendre and Legendre 2003) was used to measure the similarity of studies and ES. The double-zero problem occurs since the absence of an ES category in two studies does not indicate similarity between both studies while the presence of an ES category in both studies indicates similarity. The Gower distance (Gower 1971) was used to describe the dissimilarity between studies based on the values of the different indicators variables of Table S4 (*studies by indicator cluster*). The number of clusters was in all cases decided based on the Mantel correlation between the clustered data for the various cut levels of the dendrogram and the raw distance matrix (Legendre and Legendre 2003). Mantel correlation is meant here in its simplest case, i.e., the equivalent of a Pearson r correlation between the values in the two distance matrices.

All analysis was done in R 3.4.1 (R Core Team 2017) using the packages cluster 2.0.6 (Maechler et al. 2017), gclus 1.3.1 (Hurley 2012), gplots 3.0.1 (Warnes et al. 2016), lattice 0.20–35 (Sarkar 2008), RColorBrewer 1.1–2 (Neuwirth 2014), reshape2 1.4.2 (Wickham 2007), sp. 1.2–5 (Pebesma and Bivand 2005), vcd 1.4–3 (Meyer et al. 2016), and vegan 2.4–3 (Oksanen et al. 2017).

Results and discussion

Distribution of case studies over space and across ecosystem service categories

A global operationalization of ES requires case studies of similar quality to be conducted across the world. However, the geographical distribution of ES studies was highly

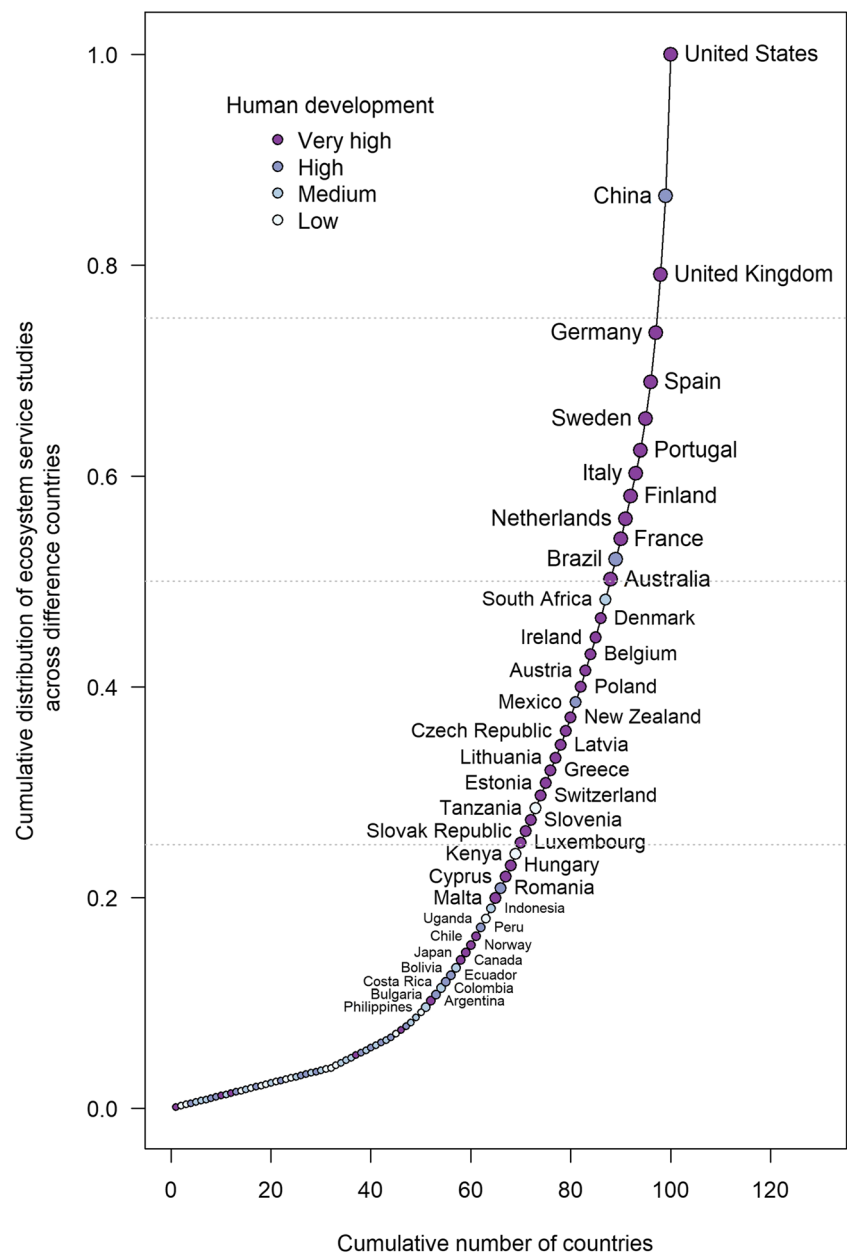
skewed: the top 13 countries in our sample made up for 50% of the total number of case studies, the top 31 for 75% of the total number of case studies (cf. Figure 1). Most ES research was undertaken in the USA, China, and the EU. In recent years, the share of studies conducted in the USA and China has been reduced while the share of studies conducted in countries of the EU has increased (cf. supporting online material)—this is mainly due to an increase in ES studies that cover the EU25 and EU27 countries. The distribution of case studies shows a pattern related to development status (UNDP 2014). From the 31 countries in which 75% of the studies in our sample were conducted, the majority (87%) took place in countries with a very high human development index (HDI). The only exceptions were the People’s Republic of China, the Federative Republic of Brazil, and the United Mexican States (countries with a high HDI) as well as the United Republic of Tanzania (low HDI). A quasi-Poisson generalized linear model with a log link identified a significant positive relationship between the number of ES case studies per country and the human development index (HDI, slope at the link: scale 5.7, p value: $5e-05$, explained deviance: 29%). This uneven distribution of case studies limits the ability of regional and local decision-makers outside the most studied countries to identify most urgent threats for ES provisioning since the knowledge base is relatively narrow in large parts of the world. Especially worrisome is the lack of studies in low-developed countries in which societies depend much more on ES than in higher developed countries.

Marine systems were clearly underrepresented in the sample: only 21 studies (~4%) dealt with marine ES. Eighty-five percent of these marine studies were published in 2014 and 2015, indicating an increasing awareness of the ES community on the importance of this blind spot.

Beside geographical distribution, a representative range of ES should be covered. A comprehensive ecosystem assessment is only possible if a representative set of ES is quantified, not particularly those that are easy to estimate. An uneven coverage of ES categories provides an incomplete picture of the system under study (Baveye 2017) and might lead to sincere shortcomings with respect to conclusions drawn from the results if the uneven coverage is not taken into account.

Coverage of ES categories in research was uneven across time (cf. Figure 4 and supporting online material). So far, research focused on “food provisioning,” “climate regulation” (mainly carbon sequestration), “biodiversity and nursery” (mainly species richness indicators), and “opportunities for recreation and tourism.” Other ES such as “ornamental species,” “biochemical products and medicinal resources,” or “spiritual & artistic inspiration” were rarely considered. Possible reasons for this unequal distribution across categories are perceived importance of the ES categories by researchers and/or stakeholders, different research background of study leaders, or financial, logistic, and scientific challenges to

Fig. 1 Cumulative distribution of case studies across countries. The y-axis shows the cumulative sum of case studies by the different countries. The gray horizontal lines indicate the 25th, 50th, and 75th percentile. The top 50 countries with most ecosystem service case studies in the sample are labeled. Development status of the countries is color coded according to the human development index (HDI) for 2015 (<http://hdr.undp.org/>). Global studies and marine studies in the open ocean were excluded here. Short country names as used by the World Bank are provided instead of official country names to improve readability



quantify some ES in the field. Potentially, the uneven distribution might simply reflect the importance of the different ES categories for human well-being or at least their perception by scientists or stakeholders. There is good reason to believe that, e.g., ornamental species are in most cases of less concern than food security or avoidance of hazardous events. However, several studies (e.g., Vieira et al. 2014; Jacobs et al. 2015; Oleson et al. 2015; Tilliger et al. 2015) have stressed the importance of other cultural ecosystem services than recreation and tourism for the public, which is not in line with the reflection of these services across case studies.

The cluster analysis based on the ES that were studied in the case studies revealed 11 clusters (cf. Table 1 and Fig. 2). These clusters of studies focusing on similar combinations of

ES categories could represent different research communities inside of the ES community. Indicator values from Table S4 differ clearly between the studies by ES clusters. The frequency of studies in each of those studies by ES cluster differed by development status (measured by the HDI) of the countries the study was located in (cf. Figure 3). Studies from cluster “Tourism and recreation,” “soil services,” “water quality and habitat provisioning,” and “water quality, food provisioning, air quality” were mainly conducted in countries with the highest HDI. This implies that information on these ES clusters is even more biased than the uneven distribution of studies across countries suggests. Studies in cluster “climate regulation, soil retention, water quality, habitat provisioning” have been studied in countries with an HDI of around 0.7 (which

Table 1 Studies by ecosystem service study cluster: cluster of case studies based on the ecosystem services analyzed. In quotation marks, labels are given that are used when referring to the clusters in the text

Cluster number	Ecosystem services mainly studied by case studies in the cluster	Number of studies in cluster 1
1	“Forest services”	40
2	“Food and water provisioning”	94
3	“Diversity of Ecosystem services”	163
4	“Climate regulation, water provisioning, air quality”	70
5	Climate regulation, water provisioning, to a lower degree air quality “Habitat provisioning and other services”	209
6	Habitat provisioning, food provisioning, timber and fiber provisioning, climate regulation, tourism and recreation potential, hazard mitigation “Climate regulation, soil retention, water quality, habitat provisioning”	58
7	“Biological regulation” (pollination and biological pest control)	47
8	“Tourism and recreation”	76
9	Tourism and recreation together with other cultural services “Soil services”	22
10	Soil services, to a lower degree food provisioning and biological regulation “Water quality and habitat provisioning”	26
11	Water quality and habitat provisioning (mostly in aquatic systems) “Water quality, food provisioning, air quality”	31
	Water quality, to a lower degree food and air quality	

mainly represents ES studies in China). Studies in countries with a low HDI focused on the provisioning of food and water as well as forest services. This is not too surprising, given the stronger dependency of relatively large parts of the population of these countries on these ES. However, it indicates that trade-off analysis in these countries might overlook other important services.

Social-ecological validity

Social-ecological validity means that measurements, modeling and monitoring of ecosystem functions, and the social dimension related to ES supply and demand are close to the phenomenon measured and not abstract and unsubstantiated proxy indices (Seppelt et al. 2011; Fischer et al. 2015). We used six indicators for social-ecological validity: data source, model type, indicator used, system boundary, uncertainty, and validation (cf. Figure 5, Table S4).

A third of the case studies (34%) used look-up tables (cf. Figure 5a)—often together with simple land-cover classes as proxies, which further limits the reliability of a look-up table approach. The rest of the case studies used statistical models (29%), process models (13%), and GIS models (12%). Modeling approaches differ with respect to their ability to account for feedbacks, non-linear effects (Grêt-Regamey et al. 2014), and spatial and temporal variability (Dale and Polasky 2007; Eigenbrod et al. 2010a) and to predict system behavior under changing boundary conditions (Bennett et al. 2015; Rieb et al. 2017). There is no general best modeling approach—depending on the research question, purpose of

study, and the available data, different approaches might be preferred (Bennett et al. 2012). Given the complexity of human-environment interactions and the importance of feedbacks in ecosystem processes as well as in social processes, it has to be assumed that models that ignore such feedbacks are limited in their ability to correctly predict changes in both ES demand and supply. Especially, the ability to predict non-linear system behavior is limited in models without feedbacks. Look-up table approaches and most GIS (geographic information system) approaches are not able to incorporate feedbacks and are therefore limited with respect to social-ecological validity. Substantial shortcomings associated with the use of look-up tables have been reported by Konarska (2002) and Eigenbrod et al. (2010b). The types of model categories used differed across the different ecosystem service categories (cf. Figure 4): process models and statistical models were seldom used in the assessment of cultural services and the less frequently assessed provisioning services such as ornamental species or genetic resources. The application of the different methods was unequally distributed across the ES study clusters from Table 1. The use of look-up tables was most widespread in cluster “diversity of ES” (52% of studies) in which studies analyzed many different ES together. The use of GIS models was highest in cluster “climate regulation, water provisioning, air quality” (21%) and “habitat provisioning and other services” (21%), statistical models were used most frequently in clusters “biological regulation” (63%) and “soil services” (62%), while process models were used most often in clusters “climate regulation, soil retention, water quality, habitat provisioning” (27%), “soil services” (25%), and

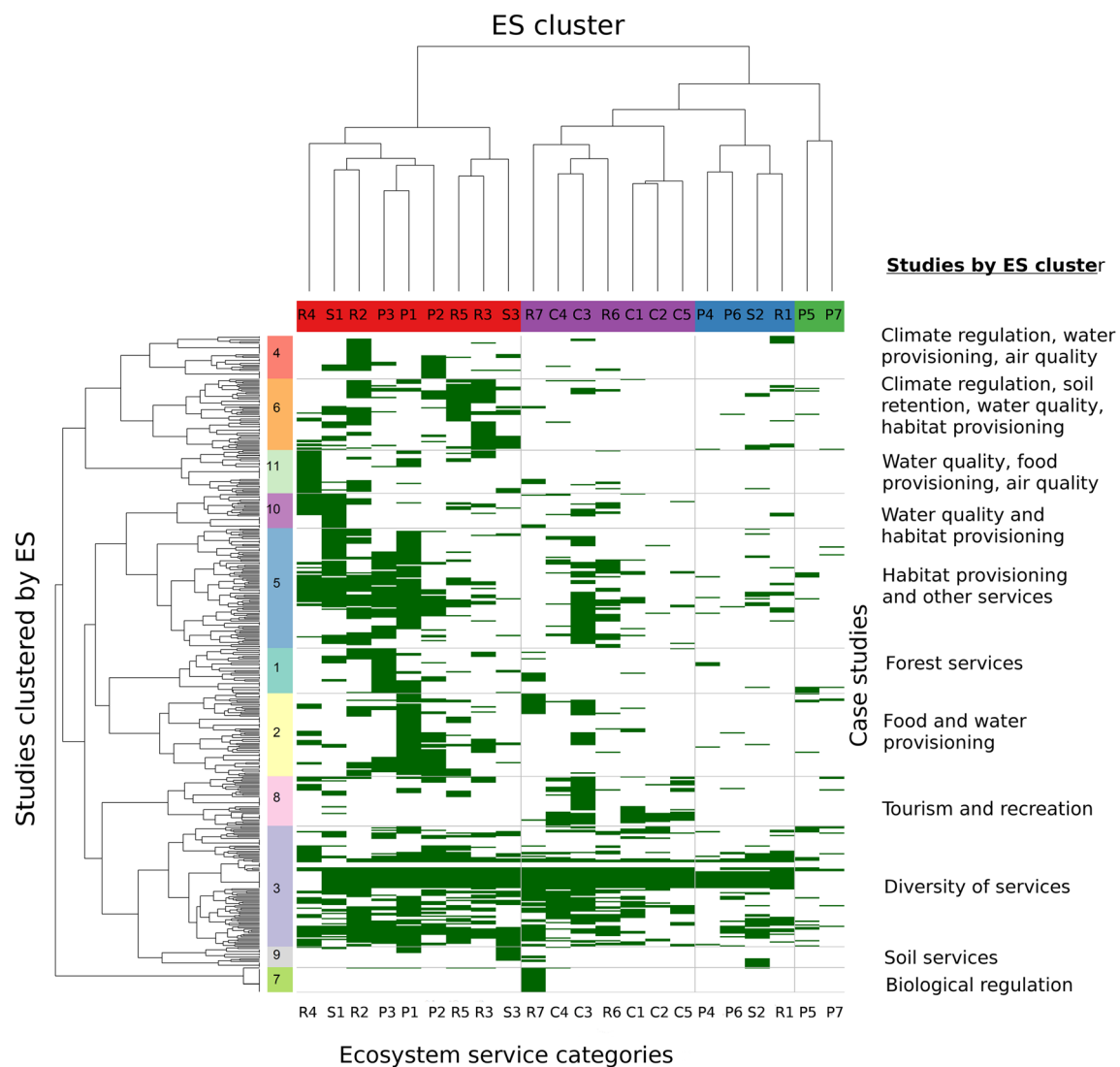


Fig. 2 Case studies clustered with respect to ecosystem services (ES) studied. The studies have been ordered to reflect similarities between ES (ES cluster) at the x-axis and similarities between studies (studies by ecosystem services cluster) at the y-axis. Membership of studies to the different types of clusters is indicated by the colors at the margin of the plot as well as by the two dendrograms. The numbers shown at the y-axis correspond to the cluster numbers presented in Table 1—cluster labels are provided at the far right. The central matrix of the figure indicates if an ecosystem service has been studied (green) in a case study or not (white). Horizontal and vertical lines have been added to simplify the identification of clusters in the central matrix. The ecosystem service categories shown at the x-axis are as follows (in order of appearance):

R4: water quality regulation; S1: biodiversity and nursery; R2: climate regulation; P3: provisioning of fiber, fuel, and other organic raw materials; P1: food provisioning; P2: freshwater provisioning; R5: soil retention and erosion protection; R3: water quantity regulation; S3: nutrient cycling; R7: biological regulation; C4: esthetic: appreciation of natural scenery; C3: opportunities for tourism and recreational activities; R6: natural hazard mitigation/ disturbance regulation; C1: cultural heritage and identity; C2: spiritual and artistic inspiration; C5: science and educational services; P4: provisioning of inorganic resources; P6: provisioning of genetic material; S2: soil formation; R1: air quality regulation; P5: provisioning of biochemical products and medicinal resources; P7: provisioning of ornamental species

“water quality, food, air quality” (27%). There was no obvious pattern that the use of specific models was biased towards higher or lower human development status of the country where the case study was located. Use of process models and of statistical models was a bit more frequent in countries of highest human development status, and statistical models were observed more frequently in least developed countries. However, it seems that issues such as data availability did not

hinder the use of process models in countries of lower human development status.

Frequently, neither results obtained from ES models were validated (86%) nor were their uncertainties quantified (49%) (cf. Figure 5b, c). Assuming that all models are wrong but some are useful (Box 1976), the usefulness of the models for the purpose of a study needs to be demonstrated. The only way to estimate the reliability of any type of model is a test

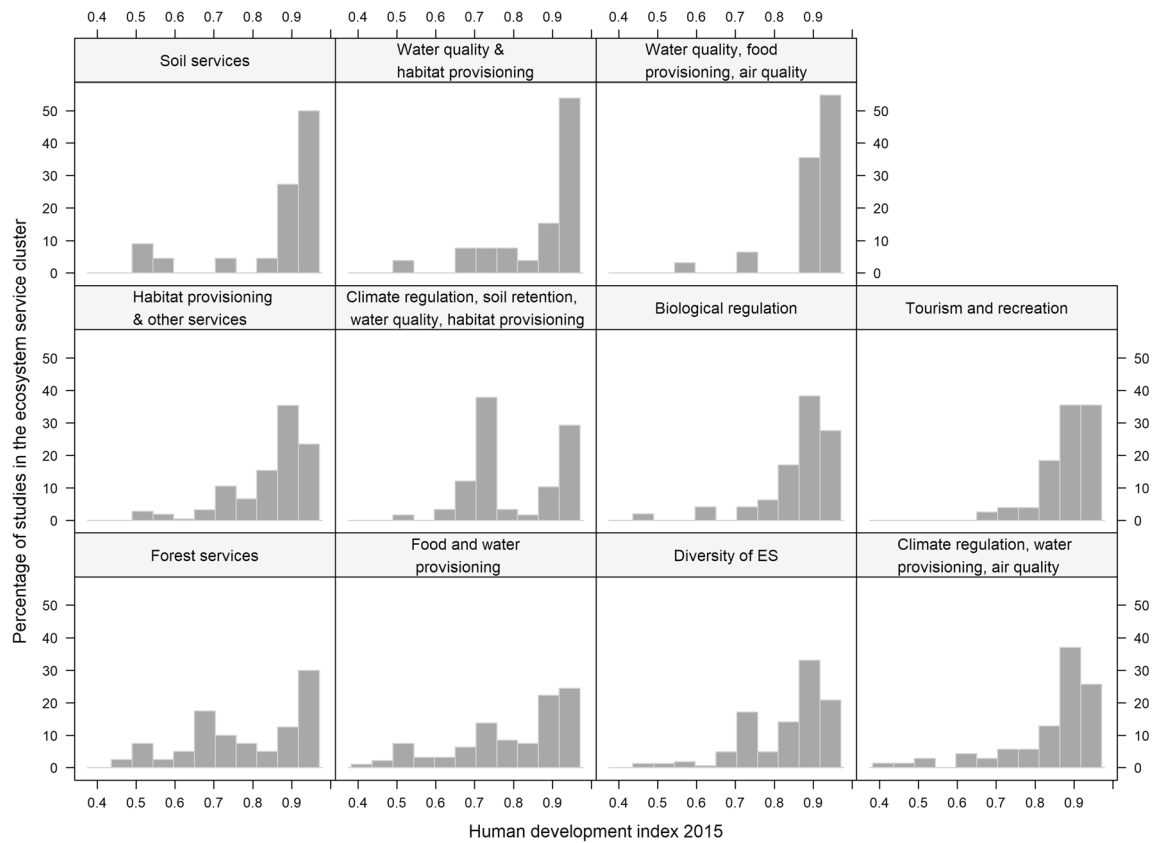


Fig. 3 Distribution of studies in the 11 ecosystem service study clusters across the human development index (HDI). Each panel shows the distribution of studies in the cluster across the HDI—percentages add up to 100 for each panel

against independent data and an analysis of the uncertainty of model predictions (Kirchner et al. 1996; Jakeman et al. 2006; Dormann et al. 2008; Bennett et al. 2012; Laniak et al. 2013; Hou et al. 2013; Hamel and Bryant 2017). Such a validation of results with independent data and an assessment of the attached uncertainty is a necessary prerequisite to judge conclusions drawn from model results. It should be mandatory to discuss results in the light of the quantified uncertainties and help thereby decision-makers to decide if results are reliable enough to support the decision to be made. Uncertainties were most often quantitatively assessed in statistical models (40%), followed by process-based models (31%), GIS models (25%), and look-up-table approaches (22%). Consideration of uncertainty differed substantially across the ES study clusters from Table 1: studies in cluster “tourism and recreation” showed the lowest percentage of studies that considered uncertainty quantitatively (16%), while clusters “soil services”, “biological regulation” and “forest services” contained the highest number of studies that considered uncertainty quantitatively (50%, 47%, and 40%, respectively). The highest share of studies using validation was found in clusters “forest services” (34%) and “water quality, food provisioning, air quality” (25%) and lowest share in “biological regulation” (5%).

Secondary data have been used exclusively by 56% of the studies (cf. Figure 5d). Secondary data might not be well

suit for the purpose of the ES study since they have in most cases been sampled and potentially aggregated for a different purpose. Therefore, spatial and temporal extent and resolution as well as thematic resolution are often suboptimal. Relying on suboptimal data to assess the provisioning of ES or the demand for those ES may hamper the social-ecological validity of the results. Interestingly, a strong difference between demand-side and supply-side studies was observed: only 16% of the demand-side studies relied on secondary data compared to 60% of the supply-side studies. Use of primary data was highest in ES study clusters “biological regulation” (68%), “tourism and recreation” (80%), “soil services” (80%), and “water quality and habitat provisioning” (62%), and lowest in ES study clusters “habitat provisioning and other services” (25%) and “climate regulation, soil retention, water quality, habitat provisioning” (23%).

Studies split relatively even between administrative (39%) and biophysical (44%) system boundaries. The social-ecological validity of a study depends on an appropriate system boundary definition. Depending on whether the focus is on the supply or the demand side of ES, both a biophysical and an administrative system boundary definition might be appropriate. Twelve percent of the studies used a combination of demand- and supply-side-system-boundary definitions. These were studies in which either demand or supply was

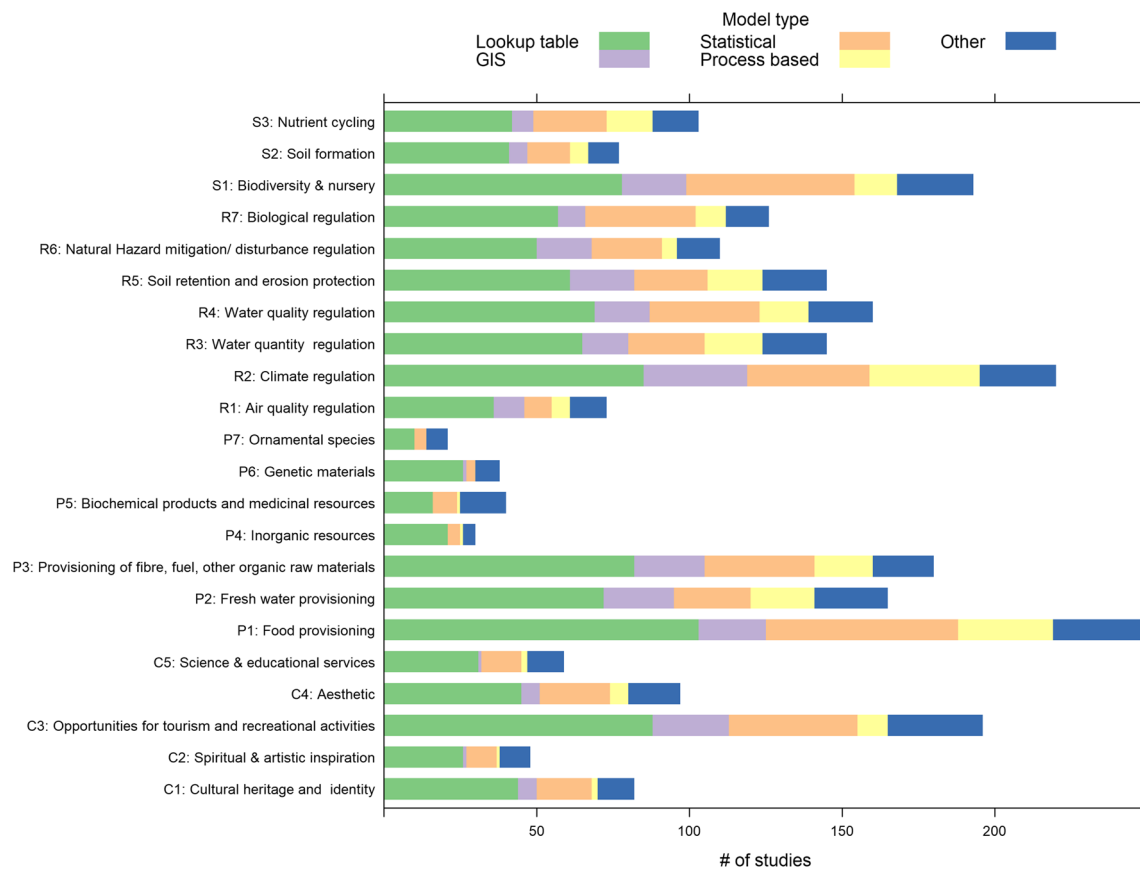


Fig. 4 Number of studies in which the different ecosystem service categories have been studied. In addition, the main model types used to

quantify the service are indicated. The category “other” includes meta-models and conceptual models

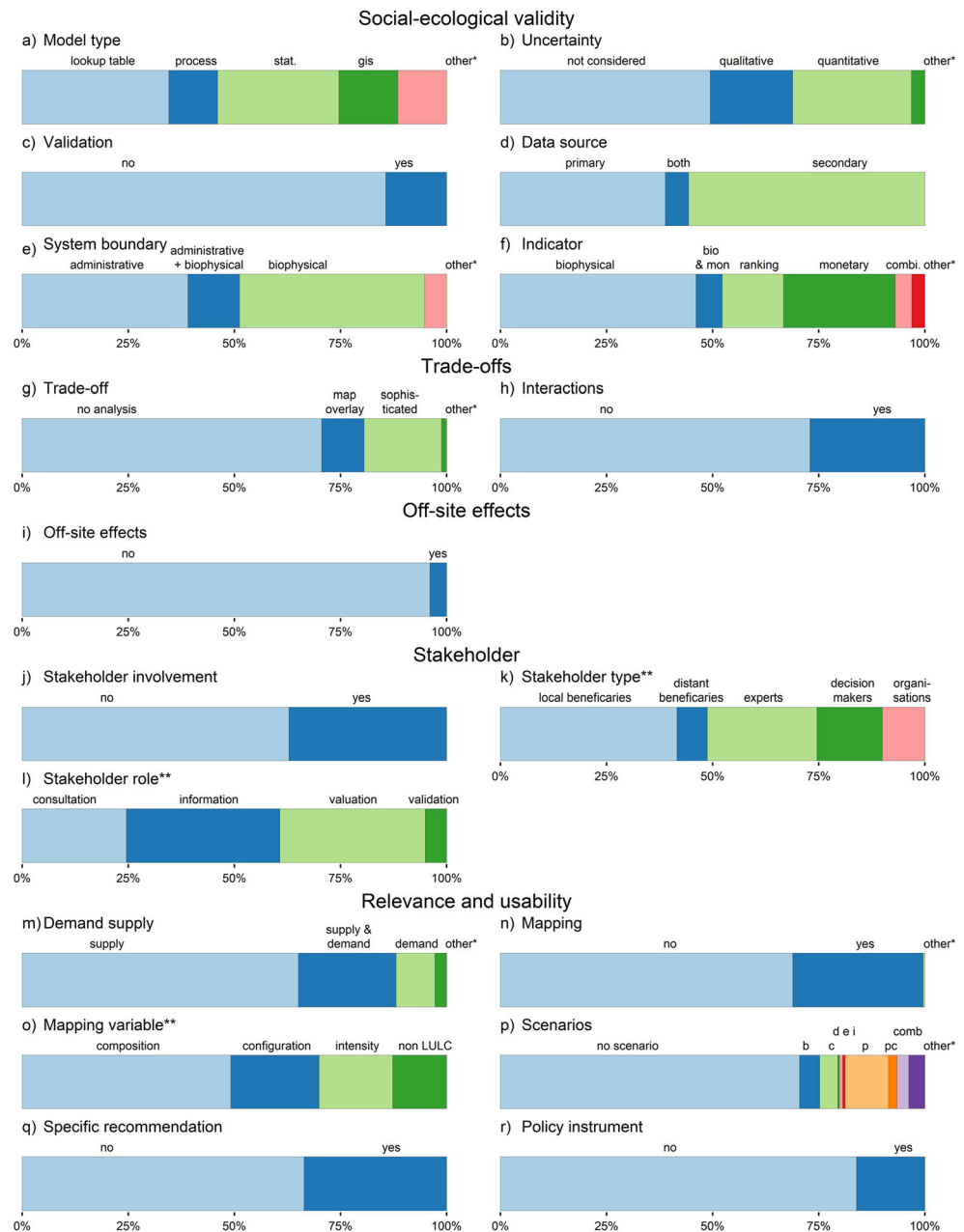
assessed for different spatial units or where different system boundaries for different ES were used. Examples are administrative units for food provisioning based on agricultural statistics and water provisioning based on watershed boundaries. Over time, the share of studies in our sample that used purely biophysical system definitions has decreased while the share that defined the system boundary on both administrative statistics and biophysical boundaries has increased (cf. Figure 6). Demand-side studies had a higher share of administrative system boundary definitions (52%), while supply-side studies had a slightly higher share of biophysical system boundaries such as watersheds (47%). While it is not possible to classify all those cases as problematic, it raises the question if system boundaries for ES assessments are drawn for practical purposes such as data availability and to what extent this influences the validity of results. Studies that relied on secondary data used administrative system boundaries more frequently (44%) compared to those that used primary data (31%). Administrative boundaries were encountered with the highest proportion in ES study clusters “climate regulation, water provisioning, air quality” (48%) and “habitat provisioning and other services” (49%) and biophysical boundaries in clusters “water quality and habitat provisioning” (63%) and “water quality, food and air quality” (70%).

Our sample further indicates that monetization of ES was performed in a third of studies: most studies used biophysical indicators (56%), followed by monetary indicators (32%) and rankings (15%). Indicator use has changed clearly over time: studies applying monetary indicators have decreased, studies using biophysical indicators have been dominant since 2011, and further since 2015 studies applying ranking indicators have gained importance (cf. Figure 6). Biophysical indicators were most frequently used in ES study clusters “biological regulation” (89%) and “water quality, food provisioning, air quality” (75%), ranking indicators most frequently in ES study clusters “tourism and recreation” (36%), “diversity of ES” (23%), and “soil services” (25%), while monetary indicators were used most frequently in ES study clusters “diversity of ES” (39%) and “habitat provisioning and other services” (35%). Monetary indicators were used slightly more often in countries with an HDI around 0.7 (e.g., China, which contributed the majority of studies in this HDI range).

Trade-offs

Ecosystem services can be expected to have mutual relations (Bennett et al. 2009). These relationships between ES can take the form of trade-offs, synergies, or no-effects (Lee and

Fig. 5 Distribution of the studies for different indicator levels. Colors solely serve to separate categories. For the indicator “scenarios” the following types have been distinguished: b, behavioral changes; c, climate change; d, demographic changes; e, economic changes; i, invasive species; p, policy changes; pc, policy changes and climate change combined; comb, combination of several scenario types in the same study. **“Other” refers to cases in which insufficient information was given in the article to make a clear assignment. **For stakeholder role and stakeholder type, the percentage refers only to the number of studies that involved stakeholders. For mapping variable, the percentages refer only to the studies that mapped ecosystem services. Single studies could use several mapping variable categories, stakeholder types, or role categories

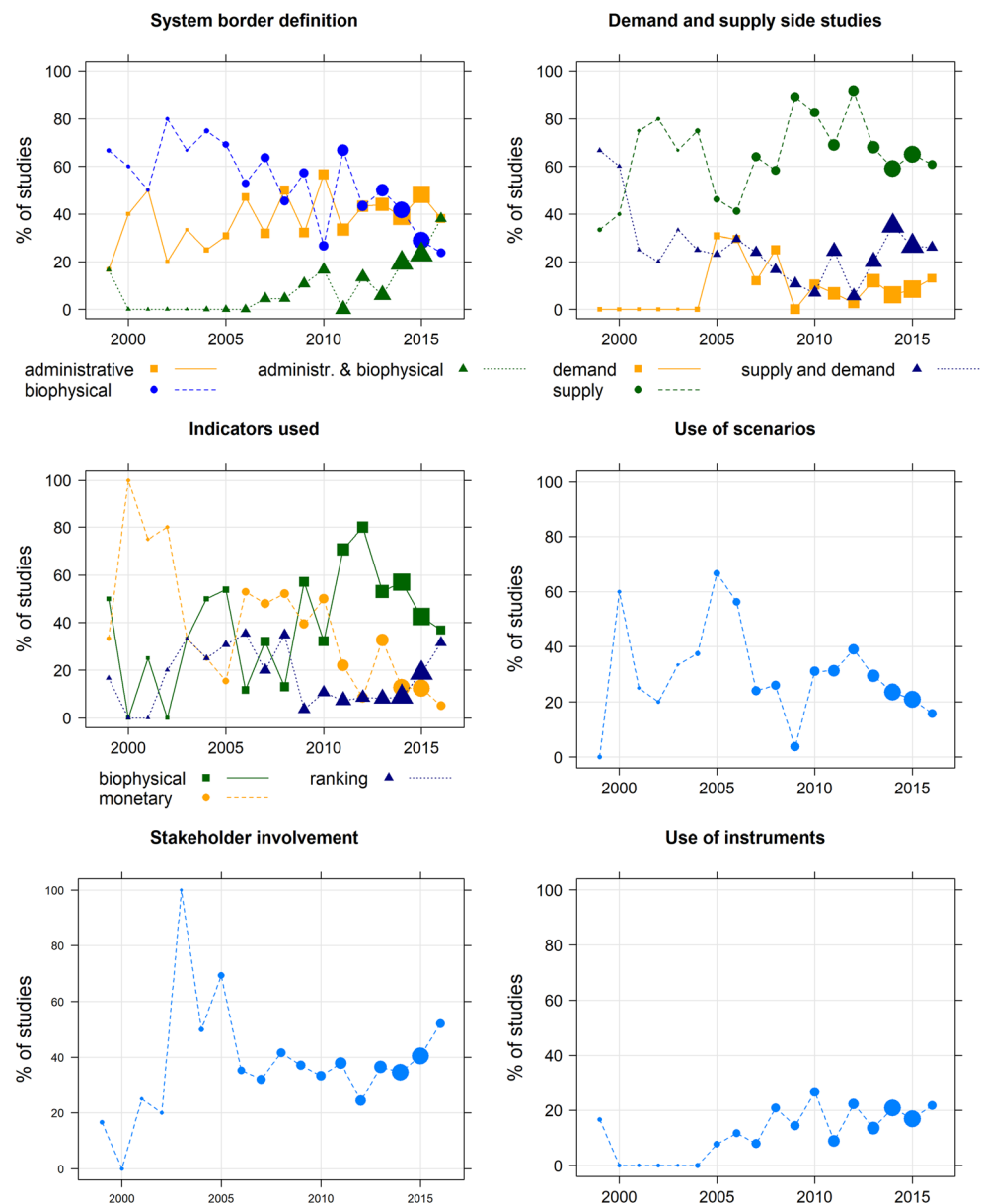


Lautenbach 2016; Cord et al. 2017a). Analyzing the relationships between ES or between management actions and ES is a crucial step for identifying promising management pathways (Bennett et al. 2009; Mouchet et al. 2014; Lee and Lautenbach 2016). The strength and even the direction of the relation might change in space and time, and can be triggered by changing management strategies. In addition, the relations between ES can be non-linear and comprise critical thresholds (Koch et al. 2009; Sabatier et al. 2013). Trade-offs and synergies can originate from common drivers or from interactions between ES (Bennett et al. 2009). Examples for interactions are the beneficial effects of forests on crop-pest control (Gagic et al. 2011) or pollination (Ricketts et al. 2008) and the

positive effects of mosaics of land use on biodiversity (Tscharntke et al. 2012b). While not all ES are linked by interactions, these are often of high relevance in multifunctional landscapes (Raffaelli and White 2013)—ignoring them in environmental management likely leads to suboptimal decisions.

The majority of studies did not analyze trade-offs (70%), 10% of the studies used a simple map overlay to assess bundles of ES or trade-offs between them, while 19% of the studies followed a more complex approach to analyze trade-offs (cf. Figure 5g). Approaches followed in trade-off analysis included optimization approaches (Chan et al. 2006), the analysis of the trade-offs of different scenarios or management

Fig. 6 Percentage of studies in a year that belonged to a specific attribute category. Values before 1999 have been dropped due to the low case numbers. Point size indicates the number of studies per year in the sample. The supporting online material contains additional time series plots. For indicators used, numbers do not add up to 100% since some studies used several indicators. Ranking indicators refer to the ranking of ecosystem services or of scenario outcomes by stakeholders or experts. For stakeholder involvement, values are relative to the number of studies per year that involved stakeholders—point sizes reflect here the number of studies per year that involved stakeholders



alternatives (Cordier et al. 2011; Grêt-Regamey et al. 2013; Kirchner et al. 2015), or the statistical analysis of survey data (Maskell et al. 2013) including trait-based analysis (Lavorel et al. 2011). Most studies that considered trade-offs focused on either trade-offs between a limited set of management actions (54% of trade-off studies) or trade-offs in space (49%)—15% of the trade-off studies considered both trade-offs between management options and trade-off in space. Eighteen percent of the trade-off studies assessed trade-offs between beneficiaries, and 11% assessed trade-offs in time. Bundles between ES were only addressed by 4% of the trade-off studies, 5% used prioritization approaches to identify where protection of ES would be of most concern, and 2% of the trade-off studies assessed trade-offs based on the potential of the system to provide ES based on a Pareto frontier approach (Seppelt

et al. 2013). The share of studies that did not consider trade-offs was highest in the ES study clusters “biological regulation” (89%), “tourism and recreation” (84%), “soil services” (81%), and “diversity of ES” (78%). Trade-off analysis by map overlay had the highest share in ES study cluster “climate regulation, water quality, air quality” (22%), and more sophisticated trade-off analysis had the highest share in ES study clusters “water quality, food provisioning, air quality” (30%), “food and water” (30%), “water quality and habitat provisioning” (26%), “forest services” (24%), and “climate regulation, soil retention, water quality, habitat provisioning” (24%).

Interactions between ES were largely and constantly ignored across time: only 26% of the studies considered interactions between ES (cf. Figure 5h). Even of the studies that

looked at many different ES categories, very few actually considered interactions between services. Considering interactions was expectedly rare among studies that used look-up tables (17%) and GIS models (14%), while it was more common in studies that used statistical approaches (40%) or process models (49%). In the case of process models, the interactions were most frequently built into the model. ES study cluster “biological regulation” did not consider interactions between ES at all which was related to the fact that the majority of studies in this cluster only analyzed a single ES (95%). Low frequency of studies with interactions between ES was also observed in ES study clusters “climate regulation, water quality, air quality” (12%), and “tourism and recreation” (13%).

The majority of studies that did not analyze trade-offs did also not incorporate interactions between ES (92%). This was particularly the case for trade-off analysis based on simple map overlays (75%), while 75% of studies that applied a more sophisticated trade-off analysis incorporated interactions between services. Examples of studies that used sophisticated trade-off approaches, without considering interactions between ES, were studies that analyzed trade-offs between different management options but based on assessment models that did not incorporate interactions between ES (e.g., van Wilgen et al. 1998; Chan et al. 2006; Jacobs et al. 2015; Hossain and Dearing 2016), studies that analyzed trade-offs in ES demand (e.g., Buckley et al. 2012; Martín-López et al. 2012), or studies that analyzed trade-offs based on field data (e.g., Jessop et al. 2015).

Off-site effects

Only 20 studies (4%) incorporated off-site-effects (also called tele-coupling, teleconnections, or off-stage ES burden: Seppelt et al. 2011; Liu et al. 2013, 2016; Yu et al. 2013; Pascual et al. 2017; cf. Figure 5i). From the perspective of global sustainability, it is important that place-based ES assessments do not overlook effects on distant social-ecological systems (Pascual et al. 2017). The decision to avoid local damage of ES might lead to a replacement of damaging activities to distant land systems with overall unsustainable impacts (Kissinger et al. 2011; Schröter et al. 2018). Taking these off-site effects into account, even in lump-sum, approaches such as water or carbon footprints might reveal underlying causes of developments and enable a better stakeholder selection as well as an improved system understanding (Hilborn 2013). Without consideration of such off-site effects, there is substantial risk for the spatial spillover rebound effect (Maestre Andrés et al. 2012), insofar as policies intending to protect one type of biodiversity or ES in a certain area have even stronger negative impacts on such biodiversity or ES in another region. We believe that international agreements on ES need to be wise about the re-distribution of impacts in

globally connected markets and that ES studies accordingly need to provide off-site analyses for their study systems. So far, we simply do not know how relevant off-site effects are in ES assessments—we can only suppose based on research from the land science community and the few published ES studies that incorporating this topic that this is a highly relevant blind spot of ES research.

Stakeholder involvement

There is evidence that stakeholder participation can enhance the quality of environmental decisions through the input of more comprehensive information (Reed 2008). Further reasons for engaging stakeholders in research include the gaining of knowledge from those most deeply connected to a particular resource or issue or community, achieving buy-in by those most likely to be affected by the research results, building stronger connections between science, policy, and society, and ensuring that research addresses real-world needs (Durham et al. 2014). The need to engage stakeholders in quantification of ES is particularly important, as ES inherently involve people whose (current) preferences and experiences define the (current) benefits of nature’s services. Frequently, perception of ES differs between scientists and stakeholders as well as between different stakeholder groups (e.g., Hicks et al. 2013). Förster et al. (2015) suggest that ES assessments require a co-design approach to adapt to decision makers’ needs, and adjust the assessment process accordingly for providing the relevant information for decision-making.

Stakeholders were involved in 37% of the case studies in the sample (cf. Figure 5j). Beside two peaks in 2003 and 2005, this share has been relatively stable over time (cf. Figure 6). Stakeholders were more frequently involved in studies investigating the demand for ES (89%) than the supply side (26%). Stakeholder involvement was highest in ES study cluster “tourism and recreation” (63%) and lowest in ES cluster “biological regulation” (5%). It was also low in ES study cluster “climate regulation, soil retention, water quality, habitat provisioning” (20%) and “soil services” (19%).

The type of stakeholders involved differed among studies (cf. Figure 5k). Overall, local beneficiaries were included most often (42% of studies), while distant beneficiaries were almost never included (7%). Experts as stakeholders were favored (26%) over decision-makers (15%) and organizations (10%). Most studies included only one type of stakeholders (53%), 30% included two types of stakeholders, 12% included three, and 4% included four stakeholder categories.

Additionally, the role of stakeholders in the ES assessment varied between studies (cf. Figure 5l). Thirty-six percent of the studies that involved stakeholders used them in an informing role where stakeholders were asked to provide additional information about ES (that were already chosen), e.g., about the use of ES, location of ES, or biophysical underpinning of ES.

In 34% of the studies in our sample, stakeholders had a valuing role where they were asked to help to prioritize ES or bundles of ES, or scenarios that were part of the study. In 24% of studies, stakeholders had a consulting role and were asked beforehand to help identify relevant ES and/or beneficiaries that should be included in the study. Only 5% of studies involved them in a validation role where stakeholders were asked to validate ES assessment methods or outcomes. While an informing role was most important at the beginning of the study period, this changed in 2012 and 2014–2016—in these years, more studies involved stakeholder in a valuing role (cf. supporting online material).

Relevance and usability

While studies focusing on single aspects of ES assessments can be of importance for decision-making and management, the promise of ES research has been the integrated assessment of the provisioning of multiple ES and societal needs (MA 2005). Decision-making and environmental management that aims to overcome sectoral perspectives by integrating the manifold perspectives of feedbacks in coupled socio-environmental systems would seriously profit from the comprehensive integration of ES supply, the demand for ES, and policy options affecting demand and/or supply for ES. Goods and services provided by ecosystems have to reach their potential users—otherwise, the benefits cannot be realized. A complete ES study should therefore aim at assessing both demand and supply for ES (Orenstein and Groner 2014; Wei et al. 2017). While the supply side can be measured as biophysical indicators, social demand for ES can be valued using economic valuation techniques in real or hypothetical markets (Turner et al. 2010; Bateman et al. 2011), or based on non-monetary indicators such as the assessment of people's perceptions of the importance of different services (Walz et al. 2016).

The majority of ES case studies (70%) focused on the supply side of ES, while 12% studied only the demand side of ES, and 18% looked at aspects of both sides at the same time (cf. Figure 5m). The share of purely demand side studies in our sample has been declining from 2008 onwards while combined supply and demand side studies showed an increasing tendency since 2010 (cf. Figure 6). Following Wolff et al. (2015), it seems that we need to improve the understanding of the demand for ES. The focus on the supply side of ES was lowest in the ES study cluster “tourism and recreation” (50%) and ES study cluster “habitat provisioning and other services” (61%). It was highest in ES study clusters “climate regulation, soil retention, water quality, habitat provisioning” (76%), “soil services” (75%), “biological regulation” (74%), “water quality, food, air quality” (73%), and “climate regulation, water quality” (73%). The highest share of studies that considered both demand and supply was observed in ES study cluster

“habitat provisioning and other services” (32%) and lowest in “soil services” (12%).

Mapping of ES is considered an important information tool for policy support (Maes et al. 2012a, b; Verhagen et al. 2014). Mapping of ES provides an easily understandable overview about the spatial heterogeneity of service provisioning or service demand, which is essential information for spatial planning. A rich diversity of approaches is available to map ES, ranging from proxy-based approaches over phenomenological, niche-based, and trait-based approaches to full process-based mapping approaches (Lavorel et al. 2017a). Their representation of uncertainty is underdeveloped, however. In total, 31% of the studies mapped ES (cf. Figure 5n). Land use composition was used by 49% of these studies, management intensity was used by 17%, and landscape configuration was used by 20% of these studies (cf. Figure 5o). Non-land use-related indicators—such as terrain or soil type—were used by 13% of the studies to map ES, in most cases in addition to land use-related indicators for example by mapping hydrological services or erosion control. Fifteen percent of the studies in the sample that mapped ES included all three components of land use, while 33% of these studies relied only on land use composition indicators, ignoring the serious shortcomings of simple land use composition-based proxies for mapping ES (Eigenbrod et al. 2010a, b). Mapping was observed most frequently in the ES study clusters “habitat provisioning and other services” (48%) and “climate regulation, soil retention, water quality, habitat provisioning” (47%) and lowest in “soil services” (6%) and “water quality, food, air quality” (9%). Mapping based purely on land use composition indicators was observed most frequently in the ES study clusters “diversity of ES” (30%), “climate regulation, water provisioning, air quality” (31%), “habitat provisioning and other services” (32%), and “water quality and habitat provisioning” (30%). The share of studies that used additional indicators beside land use composition to map ES was highest in “climate regulation, soil retention, water quality, habitat provisioning” (51%), “forest services” (57%), and “food and water provisioning” (52%).

Land systems are dynamic by nature and change over time. Similarly, demand and supply for ES are likely to change with time. A sustainable management of land systems has therefore to consider potential future changes of the system (McCauley 2006). Changes in the demand and/or the supply side of ES have to be expected due to various reasons, such as land use and climate change (e.g., Prather et al. 2013; Polce et al. 2016), demographic changes (shrinking/growing population, aging of population), behavioral changes (e.g., changes in consumption behavior: Tschamtkke et al. 2012a), economic development (e.g., the financial crisis and its effects on resource availability for environmental conservation), or policy changes (e.g., bioenergy: Banse et al. 2008; Landis et al. 2008; Campbell and Doswald 2009; Lautenbach et al. 2013).

However, the majority of studies (70%) only focused on the current state and did not consider changes to ES over time (cf. Figure 5p). ES assessments were treated mainly as a static analysis without considering changes on both the demand and the supply side of ES. The use of scenarios in the case studies has been widely fluctuating between 67% in 2005 and 4% in 2009—the use of scenarios in studies after 2012 has decreased from 40 to 21% in 2015 (cf. Figure 6). Scenarios were used most frequently in the ES study clusters “food and water provisioning” (44%), “climate regulation, water provisioning, air quality” (37%), “habitat provisioning and other services” (37%), “water quality, food, air quality” (36%), and “forest services” (34%) – they were seldom used in “biological regulation” (5%).

Scientific results may translate into specific recommendations on best practice. Only a third of the studies (33%) did provide any kind of specific recommendation (cf. Figure 5q). This is in line with the results from Laurans et al. (2013), who looked specifically at ES valuation studies and found that specific recommendations were seldom derived from economic valuations. Studies that involved stakeholders provided specific recommendations more frequently than studies that did not involve stakeholders (41% vs. 29%). Specific recommendations were also more frequently provided in demand side than in supply side studies (44% vs. 28%). Studies that mapped ES provided also more frequently specific recommendation than did studies that did not map ES (40% vs. 30%). Specific recommendations were provided most frequently in ES study clusters “climate regulation, water provisioning, air quality” (58%) and “habitat provisioning and other services” (45%) and seldom in “soil services” (19%), “water quality and habitat provisioning” (19%), “diversity of ES” (22%), and “water quality, food and air quality” (22%).

The majority of the case studies (84%) did not consider any policy instrument (cf. Figure 5r). The relatively broad category of payments for ES (PES) was mentioned mostly (in 14 studies). Studies that assess the effects of policy instruments on ES provide highly relevant information for decision-makers and stakeholders. The lack of studies on specific policy instrument clearly hampers transferring the ES concept from science to policy and practice. However, the consideration of policy instruments in ES studies has increased from 2007 onwards (cf. Figure 6). The consideration of policy instruments was highest in ES study cluster “climate regulation, water provisioning, air quality” (21%) and lowest in “forest services” (11%), “biological regulation” (11%), and “water quality and habitat provisioning” (11%).

Studies clustered by indicators

In addition to the clusters of case studies based on similarity between the ES studied by the case studies, we clustered studies based on their similarity in the indicator values from

Table S4. We identified four clusters of studies, in the following denoted as *studies by indicator clusters 1–4* (Table 2). Cluster 1 had a relatively high share of process model studies (44%) together with studies employing statistical models (26%) or look-up table approaches (18%), cluster 2 was dominated by look-up table studies (79%), cluster 3 had a high share of GIS models (52%), and cluster 4 a high share of statistical models (79%). A large share of the studies in the studies by indicator cluster 2 belonged to the cluster “diversity of ES” for blind spot indicator cluster 3 (Table 2). The distribution of studies in the clusters did not vary by development status of the countries the studies were located. The case studies in indicator cluster 1 considered interactions between ES in 63% of the time, used scenarios in 88% of the time, and focused on the supply side in only 51% of the studies. Studies in the indicator cluster 2 evenly used the different types of indicators, considered interactions between ES only in 12% of the case studies, and assessed trade-off less frequently. The case studies in the indicator cluster 3 frequently assessed uncertainty quantitatively (40%), frequently were supply-side studies (73%), involved stakeholders less frequently (23%), mapped ES frequently (88%), and dominantly used biophysical indicators (73%). Cluster 4 had the lowest use of secondary data (14%), a low use of scenarios (12%), and mapped ES only seldom (5%)—quantitative assessment of uncertainty was frequent (35%).

How to overcome the blind spots?

Many of the blind spots are related to decisions made during the design of the studies. To overcome the blind spots identified here, careful experimental design is of key importance. The term experimental design is used here in a broader sense including not only the design of field experiments but also the design of scenarios, stakeholder integration, and simulation experiments. For example, it is important to consider how to reach specific recommendations at the experimental design phase, c.f. Förster et al. (2015). A best practice example is the analysis by Kirchner et al. (2015), who demonstrate how stakeholder involvement, model integration, trade-off analysis, scenario analysis, and optimization approaches can be combined to provide recommendations for improved targeting of agri-environmental schemes to provide a more balanced and efficient supply of ES and foster rural development. If no policy instruments are tested, thematic, temporal, and spatial resolution, extent and grain not chosen in accordance with decision-makers’ requirements then specific policy recommendation cannot be derived or will fail. Börner et al. (2007) show how a farm-level bio-economic model can be used in combination with scenarios and a trade-off analysis to derive recommendation with respect to the implications of policy instruments. Similarly, it is essential to consider the dynamic nature of social-ecological systems—e.g., by

Table 2 Main properties of the studies by indicator clusters. ES = Ecosystem services.

Indicator	Cluster 1 (<i>n</i> = 89)	Cluster 2 (<i>n</i> = 198)	Cluster 3 (<i>n</i> = 102)	Cluster 4 (<i>n</i> = 116)
Main model type used	Process (44%)	Look-up table (79%)	GIS (52%)	Statistical (79%)
Specific recommendation given	39%	27%	40%	34%
Quantitative uncertainty assessment	24%	20%	40%	35%
Stakeholder involvement	41%	44%	23%	36%
Interaction between ES	63%	12%	22%	29%
Dominant study by ES cluster	“Habitat provisioning and other services” (26%), “food and water provisioning” (19%)	“Diversity of ES” (29%), “habitat provisioning and other services” (18%)	“Habitat provisioning and other services” (25%), “climate regulation, soil retention, water quality, habitat provisioning” (23%)	–
Purely supply side studies	51%	66%	73%	68%
Validation	17%	10%	21%	14%
Scenarios	88%	10%	39%	12%
Dominant indicator	Biophysical (33%) and monetary (36%)	Relatively even (Biophysical 32%, ranking 22%, monetary 34%)	Biophysical (73%)	Biophysical (57%)
Trade-off—sophisticated/map overlay	30%/8%	11%/10%	20%/20%	22%/4%
Offsite effects	9%	3%	5%	1%
Mapping ES	15%	26%	83%	5%
Policy instruments considered	27%	18%	6%	11%
Use of secondary data	73%	59%	83%	14%
System boundary definition purely biophysical	49%	37%	32%	62%

scenarios—to derive recommendations. Properties of available secondary data need to be taken into account—if these are not appropriate for the policy question at hand, the study will likely not be successful with respect to policy impact. ES categories and indicators need to be selected not only depending on data or model availability but also on their usefulness for recommendations. If not all desired parameters can be measured or modeled at preferred extent, resolution, and grain, it might be worth to check if useful results could still be derived. Excluded aspects of the studied socio-ecological system need to be reported and reflected in policy recommendations since this might heavily influence the validity of the conclusions. This refers also to the exclusion of off-site effects and possible changes in system conditions.

While not every ES study will be able to consider off-site effects, it is essential to reflect on this decision when it comes to drawing conclusions. However, it should in most cases be possible to check the plausibility of off-site effects and report them qualitatively in the discussion. Examples are the import of fish as a side effect of marine protection (Hilborn 2013), the import of forest products due to forest protection (Meyfroidt et al.

2010), carbon emissions of long distant eco-tourism (Weaver 2006; Eijgelaar et al. 2010), and bioenergy imports due to increasing bioenergy demand (Miyake et al. 2012; Mingorri 2014). Examples of more advanced approaches are virtual water or CO₂ equivalent emissions, the ecological footprint (Wackernagel et al. 2002), the land footprint (Bruckner et al. 2015), or the water footprint (Hoekstra and Chapagain 2006). The framework provided by Schröter et al. (2018) provides helpful guidance how to conceptualize off-site effects into ES assessments. Research instruments such as ecological based life cycle assessments that incorporate ES or risk-adjusted wealth accounting systems are currently missing (Pascual et al. 2017).

Validation of results requires that independent data are used for testing the model or existing data are re-used in a cross-validation setup. Problems arise due to hierarchical dependencies, random effects, and spatial and temporal autocorrelation as well as by data scarcity. Therefore, it is essential to develop an applicable validation strategy and potentially adjust the experimental design. Similarly, a proper treatment of uncertainties should be planned at the design phase to ensure that information and resources are available. Substantial knowledge already

exists in many disciplines related to ES research to identify, quantify, and communicate uncertainties which can be transferred and applied in ES studies (Hamel and Bryant 2017).

Experimental design of a case study is also essential to derive policy relevant results from trade-off analysis. The possibility to identify trade-offs and synergies is limited by the design of the case study. If biophysical interactions between ecosystem components or social interactions between beneficiaries are not included, it will be hard to identify tipping points or non-linear relationships between services. Sims et al. (2014) show the interaction between climate change, pine beetle dynamics, and disturbance-mitigating ES and highlight the importance of incorporating biophysical interactions and scenario analysis in ES assessments. If only a few possibilities are tested, recommendations might miss important compromise solutions (Seppelt et al. 2013). Kragt and Robertson (2014) provide a best practice example how Pareto frontier analysis could be used to assess trade-offs between different management options. Schipanski et al. (2014) show how trade-offs of management options can be assessed under consideration of temporal dynamics.

For a more realistic mapping of ES, it is essential to go beyond using land use composition as a proxy for ES. Lavorel et al. (2011) show how ES models based on plant traits and abiotic characteristics can be used to improve understanding of ecological constraints for the delivery of multiple services as well as to identify opportunities for enhancing the multifunctionality of landscapes. Mandle et al. (2015) and Schirpke et al. (2014) provide food for thought how trade-offs between beneficiaries can be estimated based on the derivation of beneficiaries specific areas where ES provisioning is demanded.

Clearly not every ES study needs to address all mentioned blind spots: studies aiming at methodological improvements do not necessarily have to involve stakeholders or provide specific recommendations for decision-making. Also, not all ES assessments need to incorporate seldom-investigated ES such as genetic resources or ornamental species. However, there is clearly the possibility to improve many ES case studies and the wider ES knowledge base with respect to some of the blind spots mentioned. The indicator cluster analysis (Table 2) shows that there are groups of studies that are better in addressing different blind spots. Partly this was related to the ES categories studied by the clusters, probably linked to the different research traditions of the diverse ES research community. Validation of results and a quantitative assessment of uncertainties are for example commonly applied in hydrological and ecological modeling—which might explain why these blind spots are addressed more frequently in ES assessments involving those services. Learning across the boundaries of these clusters might help to overcome the blind spots and additionally might help to reach the level of inter- and transdisciplinarity that is needed for multifaceted ES assessments. Not all concepts might be easily

transferable across different ES research communities. However, we are optimistic that an interdisciplinary exchange will stimulate new exciting developments leading to better science and improved management support.

We provide a list of critical questions (Table 3) as a guideline for authors and reviewers to check on how blind spots of ES research might be incorporated in ES assessments. In addition, we recommend the use of evidence-based approaches (Mupepele et al. 2016). Real-world problems in ES assessments will necessitate compromises and shortcuts. Therefore, we do not assume that each study will comply with all facets of our guidelines. However, these compromises should be clearly stated and not suppressed by the urge to influence policy.

Potential blind spots not covered in our analysis

We did not address all potential blind spots in our analysis. One of these aspects is the co-production of ES by both ecological and social systems (Reyers et al. 2013; Bennett et al. 2015). Without explicitly including social interactions with or anthropogenic modifications of ecosystems as an integral feature of the ecosystem in an ES assessment, decision-making based on ES frameworks risks being ineffective or even counterproductive (Chan et al. 2012; Comberti et al. 2015). In the large majority of food production systems, for example, the maintenance and enhancement of food provisioning depends primarily on land management practices. Cultural heritage is another example of co-production of services: landscapes such as classical pastoral landscapes in Portugal are clearly a co-production of land management and ecological processes (Daniel et al. 2012). Future research should therefore not only look into the ecological validity of models but also investigate how such models incorporate what we know about social systems, leading to a better “social-ecological” validity of ES assessments.

Co-production of ES by social systems was not investigated frequently. Especially lookup table approaches missed this aspect, but even studies employing process models capturing effects of land management such as LPJ (Sitch et al. 2003; Bondeau et al. 2007; Zaehle et al. 2007) or SWAT (Soil and Water Assessment Tool; Gassman et al. 2007) in most situations did not restrict the ES estimate to the ecosystem contribution. Statistical models used to quantify the potential for recreation and tourism did frequently include accessibility or infrastructure as co-variates. However, in the majority of cases the values reported included both the contribution by ecosystems and manmade infrastructure—i.e., the importance of the co-production of the service was not explicitly addressed.

The importance of monitoring ES has been stressed repeatedly (Carpenter et al. 2006; Tallis et al. 2012). Monitoring ES should include both demand- and supply-side indicators to allow consistent information on changes in the coupled socio-environmental system in which ES are provided and

Table 3 Critical questions for reviewing ecosystem service assessment studies and guiding questions for assessing the use of studies in policy and synthesis work, e.g., IPBES, or TEEB-like studies. Not all questions are limited to one blind spot. Questions can be used to critically assess existing studies—asking them at the design phase of a study might help to derive more reliable and applicable results with higher impact. ES = Ecosystem services

Critical questions for ecosystem service assessments with respect to...

Social-ecological validity:

1. How did ecosystem structures, processes, and functions translate into ES?
2. How was the model tested or validated in this system for these indicators?
3. How robust were the results in the face of uncertainty?
4. Was the data suitable for the conclusions drawn? How were conclusions supported by the available data?
5. Were effects on species and ecosystems functioning underpinning the ES considered? Which effects were ignored?
6. Were non-linear or interactive effects considered or could their existence be safely excluded? How could non-linear or interactive effects affect validity of results and conclusions?
7. Were the results reliable given the system boundary? Was the system boundary suitable for the analysis and the recommendations drawn?
8. Was the co-production of ES taken into account? How strong could that have affected trade-offs and interactions between services?
9. How did social-technological modification translate into ES?

Trade-offs:

10. Which interactions between ES were shown to be causal (by literature and/or measurements/field work)?
11. How did trade-offs depend on assumptions regarding different scenarios, management options, or changing environments?
12. Which secondary effects of changes in the supply of ES on the economic system or markets were considered?
13. Were trade-offs between beneficiaries and aspects of distributional justice considered in the trade-off analysis? Which groups of beneficiaries were potentially not adequately represented in the trade-off analysis?
14. Was the number of compared options sufficiently large or was the search space too limited to effectively support decision-making?

Off-site effects:

15. Which environmental processes on larger temporal and spatial scales were considered?
16. How did trade-mediated effects on larger spatial scale determine the results?
17. Which differences in the valuation of ES were studied when beneficiaries were distributed over different locations?
18. Which indirect effects could be triggered by recommended policy actions?
19. Were cross-scale or cross-location impacts considered?
20. Were stakeholders aware of ES burdens elsewhere?

Stakeholder work:

21. How were stakeholder groups set up and how were their roles described (transparency)?
22. How can the results and statements derived from stakeholder work be tested, e.g., did they match or contradict observed behavior and why?

Relevance and usability:

23. Were specific management actions or the effects of a policy instrument analyzed? Which management actions and policy instruments could be used to operationalize the conclusions?
24. Were specific scenarios developed and quantified or was the dynamic nature of the land system ignored?
25. Were specific recommendations given? Were results presented in a format applicable for decision-making?
26. Were governance indicators (in particular political stability, control of corruption, and government effectiveness) considered?

used. Without it will be impossible to detect trends in the potential of ecosystems to provide ES or trends in changing demands for those ES. Furthermore, it will not be possible to assess the effects of management actions and policy instruments on ES. However, existing monitoring systems have not been designed for the majority of ES—this leads to the use of secondary data and potential biases when using those to infer ES from those proxies. Monitoring was seldom a topic in the case studies in our sample. Only a few case studies have investigated longer-term developments of ES. Of those, case studies that analyzed longer-term developments in ES mostly

monitored proxies such as land use and investigated the effect on ES by means of models (Lautenbach et al. 2011; Carreño et al. 2012; Renard et al. 2015; Dittrich et al. 2017; Lavorel et al. 2017b; Locher-Krause et al. 2017). This is of course a serious blind spot that limits our ability to detect long-term trends and impacts of policy actions. Initiatives such as “Group on Earth Observations – Biodiversity Observation Network” (GEO BON; Tallis et al. 2012) and citizen science approaches (Schröter et al. 2017) may succeed in promoting the use of monitoring of ES. Remote sensing offers interesting possibilities for that (Cord et al. 2017b).

Potential shortcomings

Our analysis was based on a random sample of papers, resulting from a search specified on phrases in the title of journal articles published in the ISI Web of Knowledge. Potentially, this could have introduced a bias that limits our ability to infer about the population of all published ES studies. The random sample itself should however be large enough to allow unbiased estimates of parameters of the underlying population. By limiting the search to the ISI Web of Knowledge, we ignored a richness of published material in books and the gray literature. Experts and policymakers might prefer policy reports instead of scientific papers as a source of information. In addition, since we excluded studies not published in English we might have introduced a spatial bias: some non-English-speaking countries might have higher number of case studies published as gray literature which we ignored by our sample design. From our perspective, however, our selection is justified by the quality check that articles published in ISI-listed journals should have undergone. To put it differently: while clearly many good and excellent studies have been published only as gray literature, we assume that on average the scientific quality of gray literature would be lower and that failure to the blind spots mentioned here would even be more widespread. Testing this assumption would be the challenge for a follow-up study.

Key policy reports such as IPBES or TEEB build on existing work by summarizing key findings. While the panel experts can be expected to downweight lower-quality studies, the reports will nevertheless be affected by blind spots in the literature: if regions or ES have not been assessed in studies, the knowledge base is likely to affect the synthesis. Similarly, the low number of studies involving off-site effects or scenarios limits the possibility that such aspects are adequately reflected in the synthesis work. While the key policy reports reflect the validity of the knowledge base to provide adequate advice, synthesis work would be even more reliable if the mentioned blind spots were addressed more frequently by the scientific community.

Comparison with more specialized reviews

Our finding that we lack studies in low-developed countries in which societies depend much stronger on ES than in higher developed countries is in line with findings from Christie et al. (2012), Delgado and Marín (2015), McDonough et al. (2017), and Schmidt et al. (2016). Schmidt et al. (2016) quantified how blind spots in accounting for natural capital and ES differ between regions of the globe. McDonough et al. (2017) analyzed the country of origin of ES publications, while Delgado and Marín (2015) and Vihervaara et al. (2010) analyzed where the ES study took place. Christie et al. (2012) analyzed the use of monetary and non-monetary valuation techniques for biodiversity. Findings of

these studies show geographical patterns similar to our results and highlight research need in society's poorest nations.

The number of papers identified concerning trade-off assessments and prioritization is largely in line with findings by Martinez-Harms et al. (2015) and Howe et al. (2014). Martinez-Harms et al. (2015) also showed that most trade-off studies used simple approaches such as correlation analysis or map overlays between different ES. Our findings about the limited use of trade-off analysis and models that incorporate interactions between ES are also in line with the review of Bommarco et al. (2013) on ecological intensification building on ES. The authors found that nearly all studies had examined a single service process in isolation and that it had never been tested whether suites of below- and above-ground services contribute synergistically or trade-off in their contribution to crop yield and quality.

Conclusions

The number of published ES studies has continued to grow over the last years. However, shortcomings with respect to social-ecological validity, trade-off analysis, off-site effects, stakeholder involvement, and relevance and usability still persist. Certain aspects, such as the use of instruments, or the inclusion of the demand side in assessments, were addressed more frequently in recent studies. The continued uneven coverage in geographical space and of ES categories hinders the efficient steering of resources for the conservation of ES. One has to be careful to assess the current state of knowledge on ES—it is not sufficient to look at the number of studies on specific ES categories or at the number of studies in a region. Instead, it is important to filter out the case studies that fulfill specific requirements. The presence of blind spots seems clustered: clusters of ES studied together were prone to different blind spots—learning across those clusters offers great potential for improvement. To effectively operationalize the concept of ES, the mentioned blind spots need to be addressed by upcoming studies. The list of critical questions provided (Table 3) can help to raise the awareness of the blind spots both for synthesis of existing knowledge and for future research agendas. Furthermore, it might help to stimulate critical thinking to further improve ES research. The scientific community has come a long way and delivered important results for policymakers and managers—still, we all should strive to identify ways to improve our research and how to provide specific policy recommendations from our results.

Acknowledgements We would like to thank two anonymous reviewers who helped to improve the manuscript.

Funding information The work has been funded by the EU-FP7 project OPERAs under grant agreement number FP7-ENV-2012-308393.

Data availability The database is available under <https://figshare.com/s/16b8a3bdf43cdcd26e2f>, <https://doi.org/10.6084/m9.figshare.4930010>.

Publisher's Note Springer Nature remains neutral with regard to jurisdictional claims in published maps and institutional affiliations.

References

- Baker J, Sheate WR, Phillips P, Eales R (2013) Ecosystem services in environmental assessment—help or hindrance? *Environ Impact Assess Rev* 40:3–13. <https://doi.org/10.1016/j.eiar.2012.11.004>
- Balmford A, Fisher B, Green RE, Naidoo R, Strassburg B, Turner RK, Rodrigues ASL (2011) Bringing ecosystem services into the real world: an operational framework for assessing the economic consequences of losing wild nature. *Environ Resour Econ* 48:161–175. <https://doi.org/10.1007/s10640-010-9413-2>
- Balvanera P, Daw TM, Gardner TA, Martín-lópez B, Norström AV, Speranza CI (2017) Key features for more successful place-based sustainability research on social-ecological systems : a Programme on Ecosystem Change and Society (PECS) perspective. *Ecol Soc* 22:14. <https://doi.org/10.5751/ES-08826-220114>
- Banse M, van Meijl H, Tabeau A, Woltjer G (2008) Impact of EU biofuel policies on world agricultural and food markets. In: 107th EAAE Seminar, Modelling of Agricultural and Rural Development Policies. Sevilla, Spain
- Bateman IJ, Mace GM, Fezzi C, Atkinson G, Turner K (2011) Economic analysis for ecosystem service assessments. *Environ Resour Econ* 48:177–218. <https://doi.org/10.1007/s10640-010-9418-x>
- Baveye PC (2017) Quantification of ecosystem services : beyond all the guesstimates, how do we get real data? *Ecosyst Serv* 24:47–49. <https://doi.org/10.1016/j.ecoser.2017.02.006>
- Bennett EM, Peterson GD, Gordon LJ (2009) Understanding relationships among multiple ecosystem services. *Ecol Lett* 12:1394–1404. <https://doi.org/10.1111/j.1461-0248.2009.01387.x>
- Bennett ND, Croke BFW, Guariso G, Guillaume JHA, Hamilton SH, Jakeman AJ, Marsili-Libelli S, Newham LTH, Norton JP, Perrin C, Pierce SA, Robson B, Seppelt R, Voinov A, Fath BD, Andreassian V (2012) Characterising performance of environmental models. *Environ Model Softw* 40:1–20. <https://doi.org/10.1016/j.envsoft.2012.09.011>
- Bennett EM, Cramer W, Begossi A, Cundill G, Díaz S, Egho BN, Geijzendorffer IR, Krug CB, Lavorel S, Lazos E, Lebel L, Martín-López B, Meyfroidt P, Mooney HA, Nel JL, Pascual U, Payet K, Harguindeguy NP, Peterson GD, Prieur-Richard A-H, Reyers B, Roebeling P, Seppelt R, Solan M, Tschakert P, Tschardt T, Turner B, Verburg PH, Viglizzo EF, White PC, Woodward G (2015) Linking biodiversity, ecosystem services, and human well-being: three challenges for designing research for sustainability. *Curr Opin Environ Sustain* 14:76–85. <https://doi.org/10.1016/j.cosust.2015.03.007>
- Bommarco R, Kleijn D, Potts SG (2013) Ecological intensification: harnessing ecosystem services for food security. *Trends Ecol Evol* 28:230–238. <https://doi.org/10.1016/j.tree.2012.10.012>
- Bondeau A, Smith PC, Zaehle S, Schaphoff S, Lucht W, Cramer W, Gerten D, Lotze-Campen H, Müller C, Reichstein M, Smith B (2007) Modelling the role of agriculture for the 20th century global terrestrial carbon balance. *Glob Chang Biol* 13:679–706. <https://doi.org/10.1111/j.1365-2486.2006.01305.x>
- Borner J, Mendoza A, Vosti S (2007) Ecosystem services, agriculture, and rural poverty in the Eastern Brazilian Amazon: interrelationships and policy prescriptions. *Ecol Econ* 64:356–373. <https://doi.org/10.1016/j.ecolecon.2007.03.001>
- Box GEP (1976) Science and statistics. *J Am Stat Assoc* 71:791–799
- Bruckner M, Fischer G, Tramberend S, Giljum S (2015) Measuring telecouplings in the global land system: a review and comparative evaluation of land footprint accounting methods. *Ecol Econ* 114:11–21. <https://doi.org/10.1016/j.ecolecon.2015.03.008>
- Buckley C, Hynes S, Mehan S (2012) Supply of an ecosystem service—farmers' willingness to adopt riparian buffer zones in agricultural catchments. *Environ Sci Pol* 24:101–109. <https://doi.org/10.1016/j.envsci.2012.07.022>
- Campbell A, Doswald N (2009) The impacts of biofuel production on biodiversity: a review of the current literature. UNEP-WCMC, Cambridge
- Carpenter SR, Defries R, Dietz T, Mooney HA, Polasky S, Reid WV, Scholes RJ (2006) Millennium ecosystem assessment: research needs. *Science* (80-) 314:257–258. <https://doi.org/10.1126/science.1131946>
- Carreño L, Frank FC, Viglizzo EF (2012) Tradeoffs between economic and ecosystem services in Argentina during 50 years of land-use change. *Agric Ecosyst Environ* 154:68–77. <https://doi.org/10.1016/j.agee.2011.05.019>
- Chan KMA, Shaw MR, Cameron DR, Underwood EC, Daily GC (2006) Conservation planning for ecosystem services. *PLoS Biol* 4:e379. <https://doi.org/10.1371/journal.pbio.0040379>
- Chan KMA, Satterfield T, Goldstein J (2012) Rethinking ecosystem services to better address and navigate cultural values. *Ecol Econ* 74:8–18. <https://doi.org/10.1016/j.ecolecon.2011.11.011>
- Christie M, Fazey I, Cooper R, Hyde T, Kenter JO (2012) An evaluation of monetary and non-monetary techniques for assessing the importance of biodiversity and ecosystem services to people in countries with developing economies. *Ecol Econ* 83:67–78. <https://doi.org/10.1016/j.ecolecon.2012.08.012>
- Comberti C, Thornton TF, de Echeverria VW, Patterson T (2015) Ecosystem services or services to ecosystems? Valuing cultivation and reciprocal relationships between humans and ecosystems. *Glob Environ Chang* 34:247–262. <https://doi.org/10.1016/j.gloenvcha.2015.07.007>
- Cord AF, Bartkowski B, Beckmann M, Dittrich A, Hermans-Neumann K, Kaim A, Lienhoop N, Locher-Krause K, Priess J, Schröter-Schlaack C, Schwarz N, Seppelt R, Strauch M, Václavík T, Volk M (2017a) Towards systematic analyses of ecosystem service trade-offs and synergies : Main concepts , methods and the road ahead. *Ecosyst Serv* 28:264–272. <https://doi.org/10.1016/j.ecoser.2017.07.012>
- Cord AF, Brauman KA, Chaplin-Kramer R, Huth A, Ziv G, Seppelt R (2017b) Priorities to advance monitoring of ecosystem services using earth observation. *Trends Ecol Evol* 32:416–428. <https://doi.org/10.1016/j.tree.2017.03.003>
- Cordier M, Pérez Agúndez JA, O'Connor M, Rochette S, Heq W (2011) Quantification of interdependencies between economic systems and ecosystem services: an input-output model applied to the Seine estuary. *Ecol Econ* 70:1660–1671. <https://doi.org/10.1016/j.ecolecon.2011.04.009>
- Cowling RM, Egho B, Knight AT, O'Farrell PJ, Reyers B, Rouget M, Roux DJ, Welz A, Wilhelm-Rechman A, Farrell PJO (2008) An operational model for mainstreaming ecosystem services for implementation. *Proc Natl Acad Sci U S A* 105:9483–9488. <https://doi.org/10.1073/pnas.0706559105>
- Daily GC, Polasky S, Goldstein J, Kareiva PM, Mooney HA, Pejchar L, Ricketts TH, Salzman J, Shallenberger R (2009) Ecosystem services in decision making: time to deliver. *Front Ecol Environ* 7:21–28. <https://doi.org/10.1890/080025>
- Dale VH, Polasky S (2007) Measures of the effects of agricultural practices on ecosystem services. *Ecol Econ* 64:286–296. <https://doi.org/10.1016/j.ecolecon.2007.05.009>
- Daniel TC, Muhar A, Amberger A, Aznar O, Boyd JW, Chan KM a, Costanza R, Elmqvist T, Flint CG, Gobster PH, Grêt-Regamey A, Lave R, Muhar S, Penker M, Ribe RG, Schauppenlehner T, Sikor T,


- Soloviy I, Spierenburg M, Taczanowska K, Tam J, von der Dunk A (2012) Contributions of cultural services to the ecosystem services agenda. *Proc Natl Acad Sci U S A* 109:8812–8819. <https://doi.org/10.1073/pnas.1114773109>
- Delgado LE, Marín VH (2015) Ecosystem services : where on earth ? *Ecosyst Serv* 14:24–26. <https://doi.org/10.1016/j.ecoser.2015.03.002>
- Diaz S, Demissew S, Joly C, Lonsdale WM, Larigauderie A (2015) A Rosetta Stone for nature's benefits to people. *PLoS Biol* 13:e1002040. <https://doi.org/10.1371/journal.pbio.1002040>
- Dittrich A, von Wehrden H, Abson DJ, Bartkowski B, Cord AF, Fust P, Hoyer C, Kambach S, Meyer MA, Radzeviciute R, Nieto-Romero M, Seppelt R, Beckmann M (2017) Mapping and analysing historical indicators of ecosystem services in Germany. *Ecol Indic* 75:101–110. <https://doi.org/10.1016/j.ecolind.2016.12.010>
- Dormann CF, Purschke O, Marquez JR, Lautenbach S, Schroder B, García Márquez JR, Schröder B (2008) Components of uncertainty in species distribution analysis: a case study of the Great Grey Shrike. *Ecology* 89:3371–3386. <https://doi.org/10.1890/07-1772.1>
- Durham E, Baker H, Smith M, Moore E, Morgan V (2014) BiodivERsA Stakeholder Engagement Toolkit. BiodivERsA, Paris
- Ehrlich PR, Ehrlich AH (1981) *Extinction: the causes and consequences of the disappearance of species*. Random House, New York
- Eigenbrod F, Armsworth PR, Anderson BJ, Heinemeyer A, Gillings S, Roy DB, Thomas CD, Gaston KJ (2010a) The impact of proxy-based methods on mapping the distribution of ecosystem services. *J Appl Ecol* 47:377–385. <https://doi.org/10.1111/j.1365-2664.2010.01777.x>
- Eigenbrod F, Armsworth PR, Anderson BJ, Heinemeyer A, Gillings S, Roy DB, Thomas CD, Gaston KJ (2010b) Error propagation associated with benefits transfer-based mapping of ecosystem services. *Biol Conserv* 143:2487–2493. <https://doi.org/10.1016/j.biocon.2010.06.015>
- Eijgelaar E, Thaper C, Peeters P (2010) Antarctic cruise tourism : the paradoxes of ambassadorship , “ last chance tourism ” and greenhouse gas emissions. *J Sustain Tour* 18:337–354. <https://doi.org/10.1080/09669581003653534>
- Fischer J, Gardner TA, Bennett EM, Balvanera P, Biggs R, Carpenter S, Daw T, Folke C, Hill R, Hughes TP, Luthe T, Maass M, Meacham M, Norström AV, Peterson G, Queiroz C, Seppelt R, Spierenburg M, Tenhunen J (2015) Advancing sustainability through mainstreaming a social-ecological systems perspective. *Curr Opin Environ Sustain* 14:144–149. <https://doi.org/10.1016/j.cosust.2015.06.002>
- Folke C (2006) Resilience: the emergence of a perspective for social-ecological systems analyses. *Glob Environ Chang* 16:253–267. <https://doi.org/10.1016/j.gloenvcha.2006.04.002>
- Förster J, Barkmann J, Fricke R, Hotes S, Kleyer M, Kobbe S, Kübler D, Rumbaer C, Siegmund-Schultze M, Seppelt R, Settele J, Spangenberg JH, Tekken V, Václavík T, Wittmer H (2015) Assessing ecosystem services for informing land-use decisions: a problem-oriented approach. *Ecol Soc* 20. <https://doi.org/10.5751/ES-07804-200331>
- Gagic V, Tschamtko T, Dormann CF, Gruber B, Wilstermann A, Thies C (2011) Food web structure and biocontrol in a four-trophic level system across a landscape complexity gradient. *Proc R Soc B Biol Sci* 278:2946–2953. <https://doi.org/10.1098/rspb.2010.2645>
- Gassman PW, Reyes MR, Green CH, Arnold JG (2007) The soil and water assessment tool: historical development, applications and future research directions. *Trans ASABE* 50:1211–1250. <https://doi.org/10.13031/2013.23637>
- Gower JC (1971) A general coefficient of similarity and some of its properties. *Biometrics* 27:857–874
- Grêt-Regamey A, Celio E, Klein TM, Wissen Hayek U (2013) Understanding ecosystem services trade-offs with interactive procedural modeling for sustainable urban planning. *Landsc Urban Plan* 109:107–116. <https://doi.org/10.1016/j.landurbplan.2012.10.011>
- Grêt-Regamey A, Rabe S-E, Crespo R, Lautenbach S, Ryffél A, Schlup B (2014) On the importance of non-linear relationships between landscape patterns and the sustainable provision of ecosystem services. *Landsc Ecol* 29:201–212. <https://doi.org/10.1007/s10980-013-9957-y>
- Hamel P, Bryant BP (2017) Uncertainty assessment in ecosystem services analyses: common challenges and practical responses. *Ecosyst Serv* 24:1–15. <https://doi.org/10.1016/j.ecoser.2016.12.008>
- Hicks CC, Graham NAJ, Cinner JE (2013) Synergies and tradeoffs in how managers , scientists , and fishers value coral reef ecosystem services. *Glob Environ Chang* 23:1444–1453. <https://doi.org/10.1016/j.gloenvcha.2013.07.028>
- Hilborn R (2013) Environmental cost of conservation victories. *Proc Natl Acad Sci U S A* 110:98195. <https://doi.org/10.1073/pnas.1308962110>
- Hoekstra AY, Chapagain AK (2006) Water footprints of nations: water use by people as a function of their consumption pattern. *Water Resour Manag* 21:35–48. <https://doi.org/10.1007/s11269-006-9039-x>
- Hossain S, Dearing JA (2016) Recent changes in ecosystem services and human well-being in the Bangladesh coastal zone. *Reg Environ Chang* 16:429–443. <https://doi.org/10.1007/s10113-014-0748-z>
- Hou Y, Burkhard B, Müller F (2013) Uncertainties in landscape analysis and ecosystem service assessment. *J Environ Manag* 127(Suppl): S117–S131. <https://doi.org/10.1016/j.jenvman.2012.12.002>
- Howe C, Suich H, Vira B, Mace GM (2014) Creating win-wins from trade-offs? Ecosystem services for human well-being: a meta-analysis of ecosystem service trade-offs and synergies in the real world. *Glob Environ Chang* 28:263–275. <https://doi.org/10.1016/j.gloenvcha.2014.07.005>
- Hurley C (2012) gclus: Clustering Graphics. <https://cran.r-project.org/package=gclus>, R package, last accessed: 17.01.2018. <https://cran.r-project.org/package=gclus>
- Jacobs S, Wolfstein K, Vandenbruwaene W, Vrebos D, Beauchard O, Maris T, Meire P (2015) Detecting ecosystem service trade-offs and synergies: a practice-oriented application in four industrialized estuaries. *Ecosyst Serv* 16:378–389. <https://doi.org/10.1016/j.ecoser.2014.10.006>
- Jakeman AJ, Letcher RA, Norton JP (2006) Ten iterative steps in development and evaluation of environmental models. *Environ Model Softw* 21:602–614. <https://doi.org/10.1016/j.envsoft.2006.01.004>
- Jessop J, Spyreas G, Pociask GE, Benson TJ, Ward MP, Kent AD, Matthews JW (2015) Tradeoffs among ecosystem services in restored wetlands. *Biol Conserv* 191:341–348. <https://doi.org/10.1016/j.biocon.2015.07.006>
- Kirchner JW, Hooper RP, Kendall C, Neald C, Leavesley G (1996) Testing and validating environmental models. *Sci Total Environ* 183:33–47. [https://doi.org/10.1016/0048-9697\(95\)04971-1](https://doi.org/10.1016/0048-9697(95)04971-1)
- Kirchner M, Schmidt J, Kindermann G, Kulmer V, Mitter H, Pretenthaler F, Rüdiger J, Schauppenlehner T, Schönhart M, Strauss F, Tapeiner U, Tasser E, Schmid E (2015) Ecosystem services and economic development in Austrian agricultural landscapes—the impact of policy and climate change scenarios on trade-offs and synergies. *Ecol Econ* 109:2014–2016
- Kissinger M, Rees WE, Timmer V (2011) Interregional sustainability: governance and policy in an ecologically interdependent world. *Environ Sci Pol* 14:965–976. <https://doi.org/10.1016/j.envsci.2011.05.007>
- Koch EW, Barbier EB, Silliman BR, Reed DJ, Perillo GM, Hacker SD, Granek EF, Primavera JH, Muthiga N, Polasky S, Halpern BS, Kennedy CJ, Kappel CV, Wolanski E (2009) Non-linearity in ecosystem services: temporal and spatial variability in coastal protection. *Front Ecol Environ* 7:29–37. <https://doi.org/10.1890/080126>
- Konarska K (2002) Evaluating scale dependence of ecosystem service valuation: a comparison of NOAA-AVHRR and Landsat TM datasets. *Ecol Econ* 41:491–507. [https://doi.org/10.1016/S0921-8009\(02\)00096-4](https://doi.org/10.1016/S0921-8009(02)00096-4)

- Kragt ME, Robertson MJ (2014) Quantifying ecosystem services trade-offs from agricultural practices. *Ecol Econ* 102:147–157. <https://doi.org/10.1016/j.ecolecon.2014.04.001>
- Landis DA, Gardiner MM, van der Werf W, Swinton SM (2008) Increasing corn for biofuel production reduces biocontrol services in agricultural landscapes. *Proc Natl Acad Sci U S A* 105:20552–20557. <https://doi.org/10.1073/pnas.0804951106>
- Laniak GF, Olchin G, Goodall J, Voinov A, Hill M, Glynn P, Whelan G, Geller G, Quinn N, Blind M, Peckham S, Reaney S, Gaber N, Kennedy R, Hughes A (2013) Integrated environmental modeling: a vision and roadmap for the future. *Environ Model Softw* 39:3–23. <https://doi.org/10.1016/j.envsoft.2012.09.006>
- Laurans Y, Rankovic A, Billé R, Pirard R, Mermet L (2013) Use of ecosystem services economic valuation for decision making: questioning a literature blindspot. *J Environ Manag* 119:208–219. <https://doi.org/10.1016/j.jenvman.2013.01.008>
- Lautenbach S, Kugel C, Lausch A, Seppelt R (2011) Analysis of historic changes in regional ecosystem service provisioning using land use data. *Ecol Indic* 11:676–687. <https://doi.org/10.1016/j.ecolind.2010.09.007>
- Lautenbach S, Volk M, Strauch M, Whittaker G, Seppelt R (2013) Optimization-based trade-off analysis of biodiesel crop production for managing an agricultural catchment. *Environ Model Softw* 48:98–112. <https://doi.org/10.1016/j.envsoft.2013.06.006>
- Lavorel S, Grigulis K, Lamarque P, Colace M-PP, Garden D, Girel J, Pellet G, Douzet R (2011) Using plant functional traits to understand the landscape distribution of multiple ecosystem services. *J Ecol* 99:135–147. <https://doi.org/10.1111/j.1365-2745.2010.01753.x>
- Lavorel S, Bayer A, Bondeau A, Lautenbach S, Ruiz-Frau A, Schulp N, Seppelt R, Verburg P, Teeffelen AV, Vannier C, Armeth A, Cramer W, Marba N (2017a) Pathways to bridge the biophysical realism gap in ecosystem services mapping approaches. *Ecol Indic*. <https://doi.org/10.1016/j.ecolind.2016.11.015>
- Lavorel S, Grigulis K, Leitinger G, Kohler M, Schirpke U, Tappeiner U (2017b) Historical trajectories in land use pattern and grassland ecosystem services in two European alpine landscapes. *Reg Environ Chang* 17:2251–2264. <https://doi.org/10.1007/s10113-017-1207-4>
- Lee H, Lautenbach S (2016) A quantitative review of relationships between ecosystem services. *Ecol Indic* 66:340–351. <https://doi.org/10.1016/j.ecolind.2016.02.004>
- Legendre P, Legendre L (2003) *Numerical ecology*. Elsevier
- Liu J, Hull V, Batistella M, Defries R, Dietz T, Fu F, Hertel TW, Cesar R, Lambin EF, Li S, Martinelli LA, McConnell WJ, Moran EF, Naylor R (2013) Framing sustainability in a telecoupled world. *Ecol Soc* 18(2). <https://doi.org/10.5751/ES-05873-180226>
- Liu J, Yang W, Li S (2016) Framing ecosystem services in the telecoupled Anthropocene. *Front Ecol Environ* 14:27–36. <https://doi.org/10.1002/16-0188.1>
- Locher-Krause KE, Lautenbach S, Volk M (2017) Spatio-temporal change of ecosystem services as a key to understand natural resource utilization in Southern Chile. *Reg Environ Chang* 17:2477–2493. <https://doi.org/10.1007/s10113-017-1180-y>
- MA (2005) *Millennium ecosystem assessment, ecosystems and human well-being: a framework for assessment*. Island Press
- Maechler M, Rousseeuw P, Struyf A, Hubert M, Hornik K (2017) cluster: cluster analysis basics and extensions, R package, last accessed: 16.01.2018
- Maes J, Egoh B, Willemsen L, Liqueur C, Vihervaara P, Schägner JP, Grizzetti B, Drakou EG, La Notte A, Zulian G, Bouraoui F, Luisa Paracchini M, Braat L, Bidoglio G (2012a) Mapping ecosystem services for policy support and decision making in the European Union. *Ecosyst Serv* 1:31–39. <https://doi.org/10.1016/j.ecoser.2012.06.004>
- Maes J, Paracchini ML, Zulian G, Dunbar MB, Alkemade R (2012b) Synergies and trade-offs between ecosystem service supply, biodiversity, and habitat conservation status in Europe. *Biol Conserv* 155:1–12. <https://doi.org/10.1016/j.biocon.2012.06.016>
- Maestre Andrés S, Calvet Mir L, van den Bergh JCJM, Ring I, Verburg PH (2012) Ineffective biodiversity policy due to five rebound effects. *Ecosyst Serv* 1:101–110. <https://doi.org/10.1016/j.ecoser.2012.07.003>
- Mandle L, Tallis H, Sotomayor L, Vogl AL (2015) Who loses? Tracking ecosystem service redistribution from road development and mitigation in the Peruvian Amazon. *Front Ecol Environ* 13:309–315. <https://doi.org/10.1890/140337>
- Martinez-Harms MJ, Bryan B, Balvanera P, Law E, Rhodes JR, Possingham HP, Wilson K (2015) Making decisions for managing ecosystem services. *Biol Conserv* 184:229–238. <https://doi.org/10.1016/j.biocon.2015.01.024>
- Martín-López B, Iniesta-Arandia I, García-Llorente M, Palomo I, Casado-Arzuaga I, Del Amo DG, Gómez-Baggethun E, Oteros-Rozas E, Palacios-Agundez I, Willaerts B, González JA, Santos-Martín F, Onaindia M, López-Santiago C, Montes C (2012) Uncovering ecosystem service bundles through social preferences. *PLoS One* 7:e38970. <https://doi.org/10.1371/journal.pone.0038970>
- Maskell LC, Crowe A, Dunbar MJ, Emmett B, Henrys P, Keith AM, Norton LR, Scholefield P, Clark DB, Simpson IC, Smart SM (2013) Exploring the ecological constraints to multiple ecosystem service delivery and biodiversity. *J Appl Ecol* 50:561–571. <https://doi.org/10.1111/1365-2664.12085>
- McCauley DJ (2006) Selling out on nature. *Nature* 443:27–28. <https://doi.org/10.1038/443027a>
- McDonough K, Hutchinson S, Moore T, Hutchinson JMS (2017) Analysis of publication trends in ecosystem services research. *Ecosyst Serv* 25:82–88. <https://doi.org/10.1016/j.ecoser.2017.03.022>
- Meyer D, Zeileis A, Hornik K (2016) vcd: visualizing categorical data. R package version 1.4–1., <https://CRAN.R-project.org/package=vcd> last accessed: 18.01.2018
- Meyfroidt P, Rudel TK, Lambin EF (2010) Forest transitions, trade, and the global displacement of land use. *Proc Natl Acad Sci U S A* 107:20917–20922. <https://doi.org/10.1073/pnas.1014773107>
- Mingorr S (2014) The oil palm boom : socio-economic implications for Q'eqchi' households in the Polochic valley, Guatemala. *Environ Dev Sustain* 16:841–871. <https://doi.org/10.1007/s10668-014-9530-0>
- Miyake S, Renouf M, Peterson A, McAlpine C, Smith C (2012) Land-use and environmental pressures resulting from current and future bioenergy crop expansion: a review. *J Rural Stud* 28:650–658. <https://doi.org/10.1016/j.jrurstud.2012.09.002>
- Mouchet MA, Gos P, Byczek C, Lavorel S (2014) An interdisciplinary methodological guide for quantifying associations between ecosystem services. *Glob Environ Chang* 28:298–308. <https://doi.org/10.1016/j.gloenvcha.2014.07.012>
- Mupepele A-C, Walsh JC, Sutherland WJ, Dormann CF (2016) An evidence assessment tool for ecosystem services and conservation studies. *Ecol Appl* 26:1295–1301. <https://doi.org/10.1890/15-0595>
- Neuwirth E (2014) RColorBrewer: ColorBrewer palettes, <https://CRAN.R-project.org/package=RColorBrewer> package, last accessed: 22.01.2018
- Norgaard RB (2010) Ecosystem services : from eye-opening metaphor to complexity blinder. *Ecol Econ* 69:1219–1227. <https://doi.org/10.1016/j.ecolecon.2009.11.009>
- Oksanen J, Blanchet FG, Kindt R, Legendre P, Minchin PR, O'Hara RB, LG Simpson, Wagner MHHSand H (2017) *Vegan: community ecology package*. R package version 2.4–5. <http://CRAN.Rproject.org/package=vegan> last accessed: 21.12.2017
- Oleson KLL, Barnes M, Brander LM, Oliver TA, Van Beek I, Za B, Van Beukering P (2015) Cultural bequest values for ecosystem service flows among indigenous fishers : a discrete choice experiment validated with mixed methods. *Ecol Econ* 114:104–116. <https://doi.org/10.1016/j.ecolecon.2015.02.028>

- Orenstein DE, Groner E (2014) In the eye of the stakeholder: changes in perceptions of ecosystem services across an international border. *Ecosyst Serv* 8:185–196. <https://doi.org/10.1016/j.ecoser.2014.04.004>
- Pascual U, Palomo I, Adams W, Chan K, Daw T, Garmendía E, Gómez-Baggethun E, de Groot R, Mace G, Martín-Lopez B, Phelps J (2017) Off-stage ecosystem service burdens: a blind spot for global sustainability. *Environ Res Lett* 12. <https://doi.org/10.1088/1748-9326/aa7392>
- Pebesma EJ, Bivand RS (2005) Classes and methods for spatial data in R. *R News* 5:9–13
- Polce C, Maes J, Brander L, Cescatti A, Baranzelli C, Lavalle C, Zulian G (2016) Global change impacts on ecosystem services: a spatially explicit assessment for Europe. *One Ecosyst* 1:e9990. <https://doi.org/10.3897/oneeco.1.e9990>
- Prather CM, Pelini SL, Laws A, Rivest E, Woltz M, Bloch CP, Del Toro I, Ho C-K, Kominoski J, Newbold TAS, Parsons S, Joern A (2013) Invertebrates, ecosystem services and climate change. *Biol Rev Camb Philos Soc* 88:327–348. <https://doi.org/10.1111/brv.12002>
- R Core Team (2017) R: a language and environment for statistical computing. R Foundation for Statistical Computing, Vienna. URL <https://www.R-project.org/> last accessed 21.12.2017
- Raffaelli D, White PCL (2013) Ecosystems and their services in a changing world. *Adv Ecol Res* 48:1–70. <https://doi.org/10.1016/B978-0-12-417199-2.00001-X>
- Reed MS (2008) Stakeholder participation for environmental management: a literature review. *Biol Conserv* 141:2417–2431. <https://doi.org/10.1016/j.biocon.2008.07.014>
- Renard D, Rhemtulla JM, Bennett EM (2015) Historical dynamics in ecosystem service bundles. *Proc Natl Acad Sci U S A* 112:13411–13416. <https://doi.org/10.1073/pnas.1502565112>
- Reyers B, Biggs R, Cumming GS, Elmqvist T, Hejnowicz AP, Polasky S, Reyers B, Biggs R, Cumming GS, Elmqvist T, Hejnowicz AP, Polasky S (2013) Getting the measure of ecosystem services: a social–ecological approach. *Front Ecol Environ* 11:268–273. <https://doi.org/10.1890/120144>
- Ricketts TH, Regetz J, Steffan- I, Cunningham SA, Kremen C, Bogdanski A, Gemmill-Herren B, Greenleaf SS, Klein AM, Mayfield MM, Morandin LA, Ochieng A, Viana BF (2008) Landscape effects on crop pollination services: are there general patterns? *Ecol Lett* 11:499–515. <https://doi.org/10.1111/j.1461-0248.2008.01157.x>
- Rieb JT, Chaplin-Kramer R, Daily GC, Armsworth PR, Böhning-Gaese K, Turner MG, Bennett EM (2017) When , where , and how nature matters for ecosystem services : challenges for the next generation of ecosystem service models. *Bioscience* 67:820–833. <https://doi.org/10.1093/biosci/bix075>
- Sabatier R, Meyer K, Wiegand K, Clough Y (2013) Non-linear effects of pesticide application on biodiversity-driven ecosystem services and disservices in a cacao agroecosystem: a modeling study. *Basic Appl Ecol* 14:115–125. <https://doi.org/10.1016/j.baae.2012.12.006>
- Sagoff M (2011) The quantification and valuation of ecosystem services. *Ecol Econ* 70:497–502. <https://doi.org/10.1016/j.ecolecon.2010.10.006>
- Sarkar D (2008) Lattice—multivariate data visualization with R. Springer, New York
- Schipanski ME, Barbercheck M, Douglas MR, Finney DM, Haider K, Kaye JP, Kemanian AR, Mortensen DA, Ryan MR, Tooker J, White C (2014) A framework for evaluating ecosystem services provided by cover crops in agroecosystems. *Agric Syst* 125:12–22. <https://doi.org/10.1016/j.agsy.2013.11.004>
- Schirpke U, De Marco C, Tappeiner U (2014) Mapping beneficiaries of ecosystem services flows from Natura 2000 sites. *Ecosyst Serv* 9: 170–179. <https://doi.org/10.1016/j.ecoser.2014.06.003>
- Schmidt S, Manceur AM, Seppelt R (2016) Uncertainty of monetary valued ecosystem services—value transfer functions for global mapping. *PLoS One* 11:1–22. <https://doi.org/10.1371/journal.pone.0148524>
- Schröter M, Kraemer R, Mantel M, Kabisch N, Hecker S, Richter A, Neumeier V, Bonn A (2017) Citizen science for assessing ecosystem services: status, challenges and opportunities. *Ecosyst Serv* 28:80–94. <https://doi.org/10.1016/j.ecoser.2017.09.017>
- Schröter M, Koellner T, Alkemade R, Arnhold S, Bagstad KJ, Erb KH, Frank K, Kastner T, Kissinger M, Liu J, López-Hoffman L, Maes J, Marques A, Martín-López B, Meyer C, Schulp CJE, Thober J, Wolf S, Bonn A (2018) Interregional flows of ecosystem services: concepts, typology and four cases. *Ecosyst Serv* 31:231–241. <https://doi.org/10.1016/j.ecoser.2018.02.003>
- Seppelt R, Dormann CF, Eppink FV, Lautenbach S, Schmidt S (2011) A quantitative review of ecosystem service studies: approaches, shortcomings and the road ahead. *J Appl Ecol* 48:630–636. <https://doi.org/10.1111/j.1365-2664.2010.01952.x>
- Seppelt R, Lautenbach S, Volk M (2013) Identifying trade-offs between ecosystem services, land use, and biodiversity: a plea for combining scenario analysis and optimization on different spatial scales. *Curr Opin Environ Sustain* 5:1–6. <https://doi.org/10.1016/j.cosust.2013.05.002>
- Sims C, Aadland D, Powell J, Finnoff DC, Crabb B (2014) Complementarity in the provision of ecosystem services reduces the cost of mitigating amplified natural disturbance events. *Proc Natl Acad Sci U S A* 111:16718–16723. <https://doi.org/10.1073/pnas.1407381111>
- Sitch S, Smith B, Prentice IC, Arneth A, Bondeau A, Cramer W, Kaplan JO, Levis S, Lucht W, Sykes MT, Thonicke K, Venevsky S (2003) Evaluation of ecosystem dynamics, plant geography and terrestrial carbon cycling in the LPJ dynamic global vegetation model. *Glob Chang Biol* 9:161–185. <https://doi.org/10.1046/j.1365-2486.2003.00569.x>
- Tallis H, Mooney H, Andelman S, Balvanera P, Cramer W (2012) A global system for monitoring ecosystem service change. *Bioscience* 62:977–986. <https://doi.org/10.1525/bio.2012.62.11.7>
- Tilliger B, Rodriguez-Labajos B, Bustamante J, Settele J (2015) Disentangling values in the interrelations between cultural ecosystem services and landscape conservation—a case study of the Ifugao Rice terraces in the Philippines. *Land* 4:888–913. <https://doi.org/10.3390/land4030888>
- Tschamtké T, Clough Y, Wanger TC, Jackson L, Motzke I, Perfecto I, Vandermeer J, Whitbread A (2012a) Global food security, biodiversity conservation and the future of agricultural intensification. *Biol Conserv* 151:53–59. <https://doi.org/10.1016/j.biocon.2012.01.068>
- Tschamtké T, Tylianakis JM, Rand T, Didham RK, Fahrig L, Batáry P, Bengtsson J, Clough Y, Crist TO, Dormann CF, Ewers RM, Fründ J, Holt RD, Holzschuh A, Klein AM, Kleijn D, Kremen C, Landis D, Laurance W, Lindenmayer D, Scherber C, Sodhi N, Steffan-Dewenter I, Thies C, van der Putten WH, Westphal C (2012b) Landscape moderation of biodiversity patterns and processes—eight hypotheses. *Biol Rev Camb Philos Soc* 87:661–685. <https://doi.org/10.1111/j.1469-185X.2011.00216.x>
- Turner RK, Morse-Jones S, Fisher B (2010) Ecosystem valuation: a sequential decision support system and quality assessment issues. *Ann N Y Acad Sci* 1185:79–101. <https://doi.org/10.1111/j.1749-6632.2009.05280.x>
- van Wilgen BW, Le Maitre DC, Cowling RM (1998) Ecosystem services, efficiency, sustainability and equity: South Africa's Working for Water programme. *Trends Ecol Evol* 13:378. [https://doi.org/10.1016/S0169-5347\(98\)01434-7](https://doi.org/10.1016/S0169-5347(98)01434-7)
- Verhagen W, Sturck J, Schulp C, Verburg PH (2014) Mapping ecosystem services. In: van Beukering PJH, Bouma J (eds) *Ecosystem Services: From concept to practice*. Cambridge University Press, Cambridge, pp 65–86

- Vieira L, Everard M, Shore RG (2014) Ecosystem services assessment at Steart Peninsula, Somerset, UK. *Ecosyst Serv* 10:19–34. <https://doi.org/10.1016/j.ecoser.2014.07.008>
- Vihervaara P, Rönkä M, Walls M (2010) Trends in ecosystem service research: early steps and current drivers. *Ambio* 39:314–324. <https://doi.org/10.1007/s13280-010-0048-x>
- Wackernagel M, Schulz NB, Deumling D, Linares AC, Jenkins M, Kapos V, Monfreda C, Loh J, Myers N, Norgaard R, Randers J (2002) Tracking the ecological overshoot of the human economy. *Proc Natl Acad Sci U S A* 99:9266–9271. <https://doi.org/10.1073/pnas.142033699>
- Walz A, Grêt-Regamey A, Lavorel S (2016) Social valuation of ecosystem services in mountain regions. *Reg Environ Chang* 16:1985–1987. <https://doi.org/10.1007/s10113-016-1028-x>
- Warnes GR, Bolker B, Bonebakker L, Gentleman R, Liaw WHA, Lumley T, Maechler M, Magnusson A, Moeller S, Schwartz M, Venables B (2016) *gplots: Various R Programming Tools for Plotting Data*. <https://cran.r-project.org/package=gplots> last accessed: 16.01.2018
- Weaver DB (2006) *Sustainable tourism: theory and practice*. Elsevier Butterworth-Heinemann, Oxford
- Wei H, Fan W, Wang X, Lu N, Dong X, Zhao Y, Ya X, Zhao Y (2017) Integrating supply and social demand in ecosystem services assessment: a review. *Ecosyst Serv* 25:15–27. <https://doi.org/10.1016/j.ecoser.2017.03.017>
- Westman WE (1977) How much are nature's services worth? *Science* (80-) 197:960–964. <https://doi.org/10.1126/science.197.4307.960>
- Wickham H (2007) Reshaping data with the reshape package. *J Stat Softw* 21:1–20. <https://doi.org/10.18637/jss.v021.i12>
- Wolff S, Schulp CJE, Verburg PH (2015) Mapping ecosystem services demand: a review of current research and future perspectives. *Ecol Indic* 55:159–171. <https://doi.org/10.1016/j.ecolind.2015.03.016>
- Yu Y, Feng K, Hubacek K (2013) Tele-connecting local consumption to global land use. *Glob Environ Chang* 23:1178–1186. <https://doi.org/10.1016/j.gloenvcha.2013.04.006>
- Zaehle S, Bondeau A, Carter TR, Cramer W, Erhard M, Prentice IC, Reginster I, Rounsevell MD, Sitch S, Smith B, Smith PC, Sykes M (2007) Projected changes in terrestrial carbon storage in Europe under climate and land-use change, 1990–2100. *Ecosystems* 10: 380–401. <https://doi.org/10.1007/s10021-007-9028-9>

Affiliations

Sven Lautenbach^{1,2,3}  · Anne-Christine Mupepele^{4,5} · Carsten F. Dormann⁴ · Heera Lee^{2,6} · Stefan Schmidt³ · Samantha S. K. Scholte⁷ · Ralf Seppelt^{3,8,9} · Astrid J. A. van Teeffelen⁷ · Willem Verhagen⁷ · Martin Volk³

¹ Institute for Geography, GIScience Research Group, University of Heidelberg, Im Neuenheimer Feld 348, 69120 Heidelberg, Germany

² Agricultural Faculty, Institute for Geodesy and Geoinformation, Professorship for Land Use Modeling and Ecosystem Services, University of Bonn, Nußallee 1, 53115 Bonn, Germany

³ Department for Computational Landscape Ecology, UFZ - Helmholtz Centre for Environmental Research, Permoserstr 15, Leipzig, Germany

⁴ Biometry & Environmental System Analysis, University of Freiburg, Freiburg, Germany

⁵ Nature Conservation & Landscape Ecology, University of Freiburg, Freiburg, Germany

⁶ Karlsruhe Institute of Technology, Institute of Meteorology and Climate Research, Atmospheric Environmental Research (IMK-IFU), Kreuzackbahnstr. 19, 82467 Garmisch-Partenkirchen, Germany

⁷ Environmental Geography Group, Institute for Environmental Studies (IVM-VU), Faculty of Science, Vrije Universiteit Amsterdam, De Boelelaan 1087, 1081 HV Amsterdam, The Netherlands

⁸ Institute of Geoscience & Geography, Martin Luther-University Halle-Wittenberg, 06099 Halle (Saale), Germany

⁹ iDiv, German Centre for Integrative Biodiversity Research, 04103 Leipzig, Germany